

## 2011 FEBRUARY 15: SUNQUAKES PRODUCED BY FLUX ROPE ERUPTION

S. ZHARKOV<sup>1</sup>, L. M. GREEN<sup>1</sup>, S. A. MATTHEWS<sup>1</sup>, AND V. V. ZHARKOVA<sup>2</sup>

<sup>1</sup> UCL Mullard Space Science Laboratory, University College London, Holmbury St. Mary, Dorking RH5 6NT, UK

<sup>2</sup> Department of Mathematics, University of Bradford, Bradford BD7 1DP, UK

Received 2011 July 15; accepted 2011 October 4; published 2011 October 20

### ABSTRACT

We present an analysis of the 2011 February 15 X-class solar flare, previously reported to produce the first sunquake in solar cycle 24. Using acoustic holography, we confirm the first, and report a second, weaker, seismic source associated with this flare. We find that the two sources are located at either end of a sigmoid, which indicates the presence of a flux rope. Contrary to the majority of previously reported sunquakes, the acoustic emission precedes the peak of major hard X-ray (HXR) sources by several minutes. Furthermore, the strongest HXR footpoints derived from *RHESSI* data are found to be located away from the seismic sources in the flare ribbons. We account for these discrepancies within the context of a phenomenological model of a flux rope eruption and accompanying two-ribbon flare. We propose that the sunquakes are triggered at the footpoints of the erupting flux rope at the start of the flare impulsive phase and eruption onset, while the main HXR sources appear later at the footpoints of the flare loops formed under the rising flux rope. Possible implications of this scenario for the theoretical interpretation of the forces driving sunquakes are discussed.

*Key words:* Sun: coronal mass ejections (CMEs) – Sun: helioseismology – Sun: flares – Sun: particle emission – sunspots – Sun: X-rays, gamma rays

*Online-only material:* animation, color figures

### 1. INTRODUCTION

Solar quakes, first observed by Kosovichev & Zharkova (1998), are seen as ripples in the photosphere which move radially outward from a source region. They are produced as acoustic waves travel into the Sun and refract back to the photosphere. Sunquakes are normally detected via helioseismic methods such as the construction of time–distance diagrams (Kosovichev & Zharkova 1998; Kosovichev 2007; Zharkova & Zharkov 2007) or acoustic holography’s egression analysis (Donea et al. 1999; Donea & Lindsey 2005; Zharkov et al. 2011). Analysis of sunquakes offers us an opportunity to explore the physical processes of energy transport in flaring atmospheres.

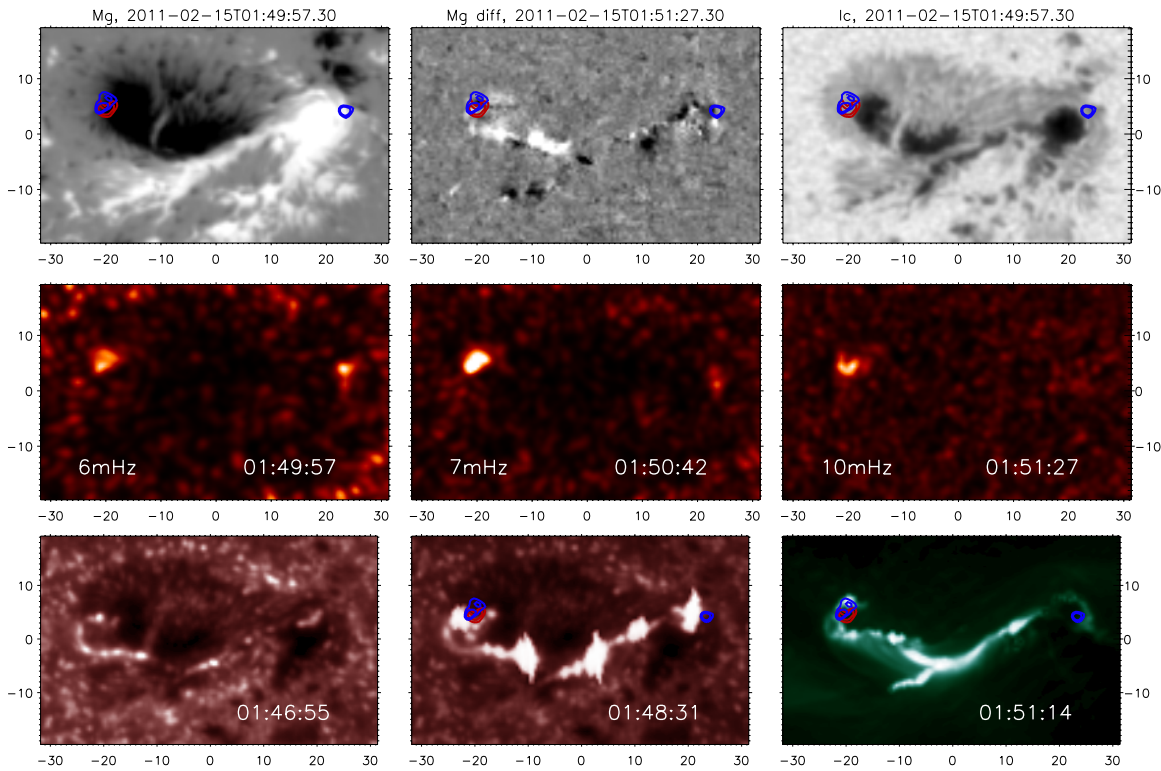
The theoretical prediction that sunquakes should be produced by the energy released during major solar flares (Wolff 1972) was supported by their discovery on the Sun by Kosovichev & Zharkova (1998). Following the first quake observation, further events were detected with holography techniques (Donea & Lindsey 2005; Donea et al. 2006a) and time–distance (Kosovichev 2006, 2007). These events showed an association either with X-class flares, such as those on 2003 October 28 and 29 (Donea & Lindsey 2005), or with M-class flares such as that on 2001 September 9 (Donea et al. 2006a). However, not all flares show seismic activity as concluded by Besliu-Ionescu et al. (2005) and Donea et al. (2006b), who reported a catalog of only 17 flares of X and M class with measurable seismic activity detected by either holographic or time–distance approaches. These observations posed the question of how the energy and momentum are transported to the solar surface and interior in order to produce sunquakes and why some of the most powerful flares often do not deliver seismic signatures.

Many of the previously detected seismic ripples and acoustic sources associated with flares were found to be cospatial with the hard X-ray (HXR) source locations (the vast majority reported in Besliu-Ionescu et al. 2005; Donea et al. 2006b), while in

some flares the seismic sources were cospatial with  $\gamma$  sources (Zharkova & Zharkov 2007; Kosovichev 2007). These cases support the idea of sunquakes being produced by hydrodynamic shocks induced by the ambient plasma heating either by electron (Kosovichev & Zharkova 1998; Kosovichev 2007) or proton beams (Zharkova & Zharkov 2007). Zharkova & Zharkov (2007) suggested that apart from high energy proton or electron beams, jet protons with quasi-thermal energy distributions can also be the source of acoustic emission and seismic ripples. Such jets, with maxima shifted to several MeV, can be ejected from a current sheet during the magnetic reconnection process (see, for example, Bárta et al. 2011 and references therein).

Donea et al. (2006a) noted that in many cases considered by Besliu-Ionescu et al. (2005) the location of acoustic sources was cospatial with and had an energy range similar to the white light emission from these flares. As a result, it was proposed that back-warming heating of the photosphere by the overlying radiation from the corona and chromosphere was the source of acoustic emission (see, for example, Donea et al. 2006a; Donea 2011, and references therein).

On the other hand, Hudson et al. (2008) noted that the energy associated with the reconfiguration of the magnetic field during a flare, the so-called McClymont jerk, can easily account for the energy required for a sunquake. Observationally this reconfiguration is seen in the line-of-sight magnetic field in the photospheric as an abrupt and permanent magnetic field change (Kosovichev & Zharkova 2001; Zharkova et al. 2005; Sudol & Harvey 2005). The energy released during an irreversible magnetic field change was found to be sufficient to account for the whole flare emission (Zharkova et al. 2005). Hudson et al. (2008) suggested that the seismic emission is initiated directly by these magnetic pulses in the form of magnetoacoustic waves (Cally 2000; Martínez-Oliveros et al. 2008; Martínez-Oliveros & Donea 2009). However, in a study of two flares with sunquakes Martínez-Oliveros & Donea (2009) found inconclusive results.



**Figure 1.** First row: magnetogram, magnetogram difference, and intensity images. Second row: egression power snapshots at different frequencies taken on 2011 February 15. Third row (left to right): two AIA 1700 Å snapshots and an AIA 94 Å image showing flare ribbons. On all images, the blue contours are 2011 February 15 01:49:57 6 mHz egression power snapshots at 2.5 and 3 times quiet-Sun egression power. Red contours are the 10 mHz egression power (same time) at three and four times quiet-Sun egression power. The images are remapped onto heliographic grid; the distance is plotted in Megameters.

(A color version of this figure is available in the online journal.)

The 2011 February 15 X2.2-class flare was the first in the much delayed rising activity phase of the new solar cycle 24. Kosovichev (2011) has reported that the flare produced a sunquake clearly seen as propagating circular ripples in running difference filtered velocity images of the surface. We present a new study that detects more seismic sources in this flare using holographic methods, and an investigation of their dynamics by taking into account the morphology of the active region and the occurrence of a coronal mass ejection (CME) in association with the flare. We describe the data in Section 2, report on the photospheric and coronal observations in Section 3, and discuss possible sunquake production in the context of a flux rope eruption and two-ribbon flare model in Section 4.

## 2. OBSERVATIONS AND DATA PROCESSING

We use full disk *Solar Dynamics Observatory* (SDO) Helioseismic and Magnetic Imager (HMI) observations, from which the helioseismic datacubes are extracted by remapping and de-rotating the region of interest using Postel projection and Snodgrass differential rotation rate. In this way we obtain 45 s cadence datacubes of HMI line-of-sight velocity, magnetogram, and intensity images. The spatial resolution for the remapped data is 0.04 heliographic degrees per pixel. The center of the extracted region is located at  $20^\circ$  latitude south and  $11^\circ 75'$  longitude to the east. The series starts at 00:59 UT 2011 February 15 and runs for 3 hr.

From the velocity running difference datacubes we measure the acoustic egression following the processing as outlined in Donea et al. (1999), Lindsey & Braun (2000), and Donea et al. (2000). The Green's functions are obtained by solving the non-

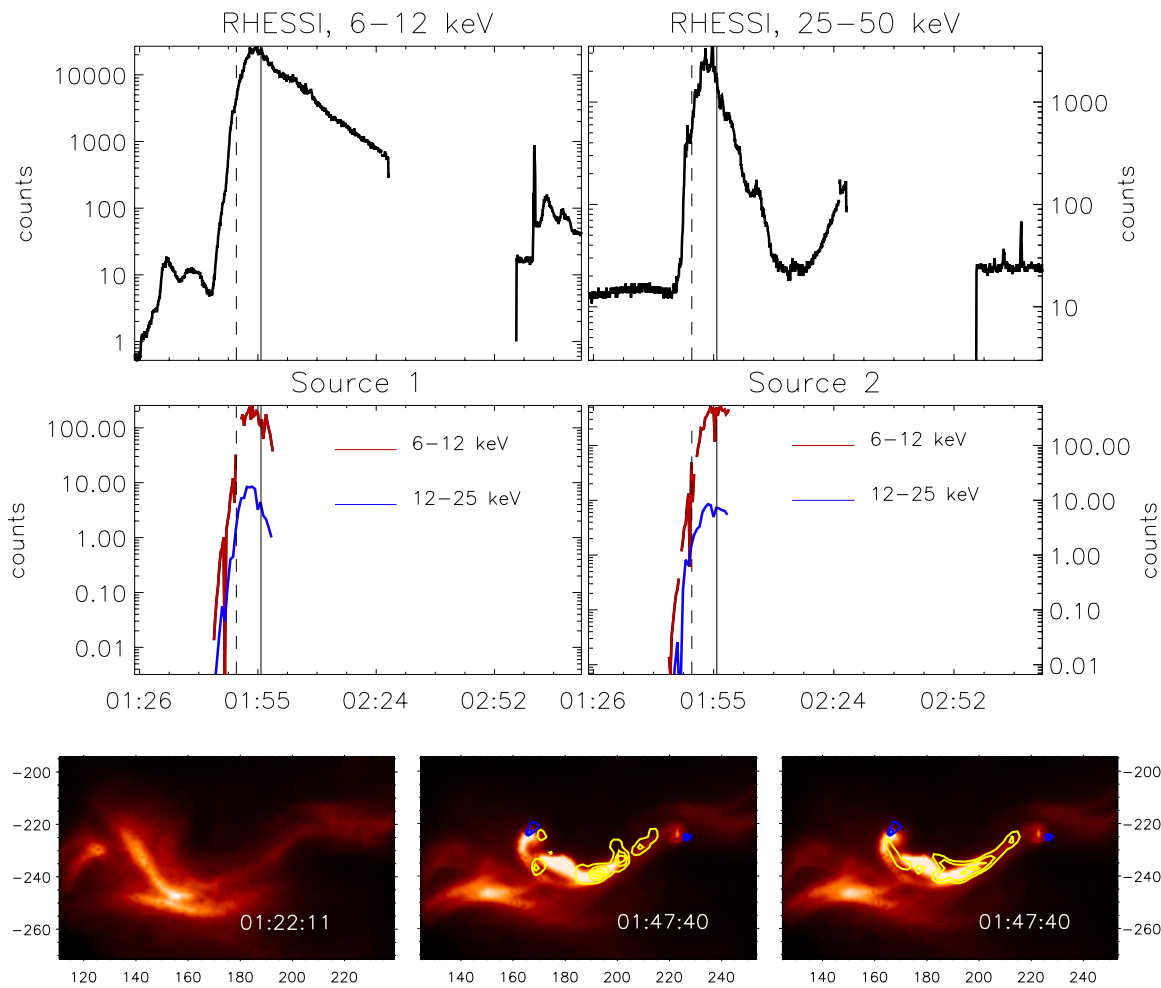
magnetic wave equation for monochromatic point source via geometric optics. To study the flare onset we use the data from SDO's Atmospheric Imaging Assembly (AIA) instrument obtained for the same period at 1700 Å and 94 Å wavelengths.

The HXR data presented in this paper are derived from *RHESSI* (Lin et al. 2002) with the *Hinode* X-Ray Telescope (XRT; Golub et al. 2007) providing data for soft X-ray information. *RHESSI* observed the flare from the pre-cursor phase beginning at 01:27 UT until 02:30 UT, covering the entire impulsive phase. We used the CLEAN algorithm to produce images at between 20 and 40 s cadences covering the duration of the flare.

## 3. RESULTS

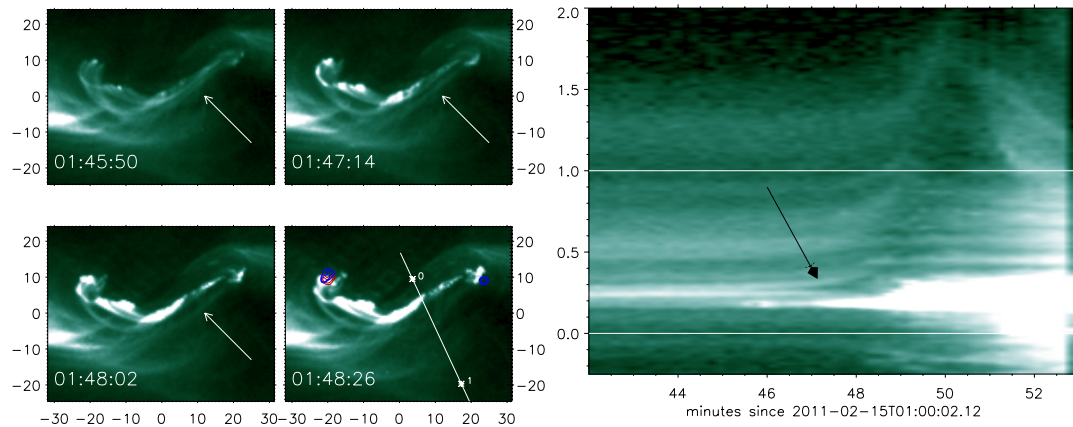
### 3.1. Active Region Features

The sunquake occurred in NOAA active region 11158, which began emerging in the eastern hemisphere on the 2011 February 10. Two bipoles emerged side by side creating a complex multipolar region. As the active region evolved through both emergence and cancellation events the coronal loops became increasingly sheared, and by late February 14 the loops in the northern part of the active region showed a forward S-shaped sigmoidal structure in soft X-rays and EUV emission (Figures 1 and 2). The occurrence of a sigmoid in the active region gives strong support to the presence of a magnetic flux rope at this location (Green & Kliem 2009). The sigmoid formed along a polarity inversion line, where the flux cancellation provides the mechanism by which the helical field lines of the flux rope can be formed from a sheared arcade (van Ballegoijen & Martens 1989; Green et al. 2011).



**Figure 2.** Top row shows *RHESSI* counts (over the whole region). The next row shows *RHESSI* data integrated over egression sources. The vertical lines correspond to 01:50 UT and 01:56 UT. Bottom row (left to right): *Hinode* XRT image showing the sigmoid and *RHESSI* contours for the following energy ranges: 12–25 keV (middle plot) and 6–12 keV (right). The arcsecond coordinates are plotted along the  $x$ - and  $y$ -axes. The red and blue contours are as in Figure 1.

(A color version of this figure is available in the online journal.)



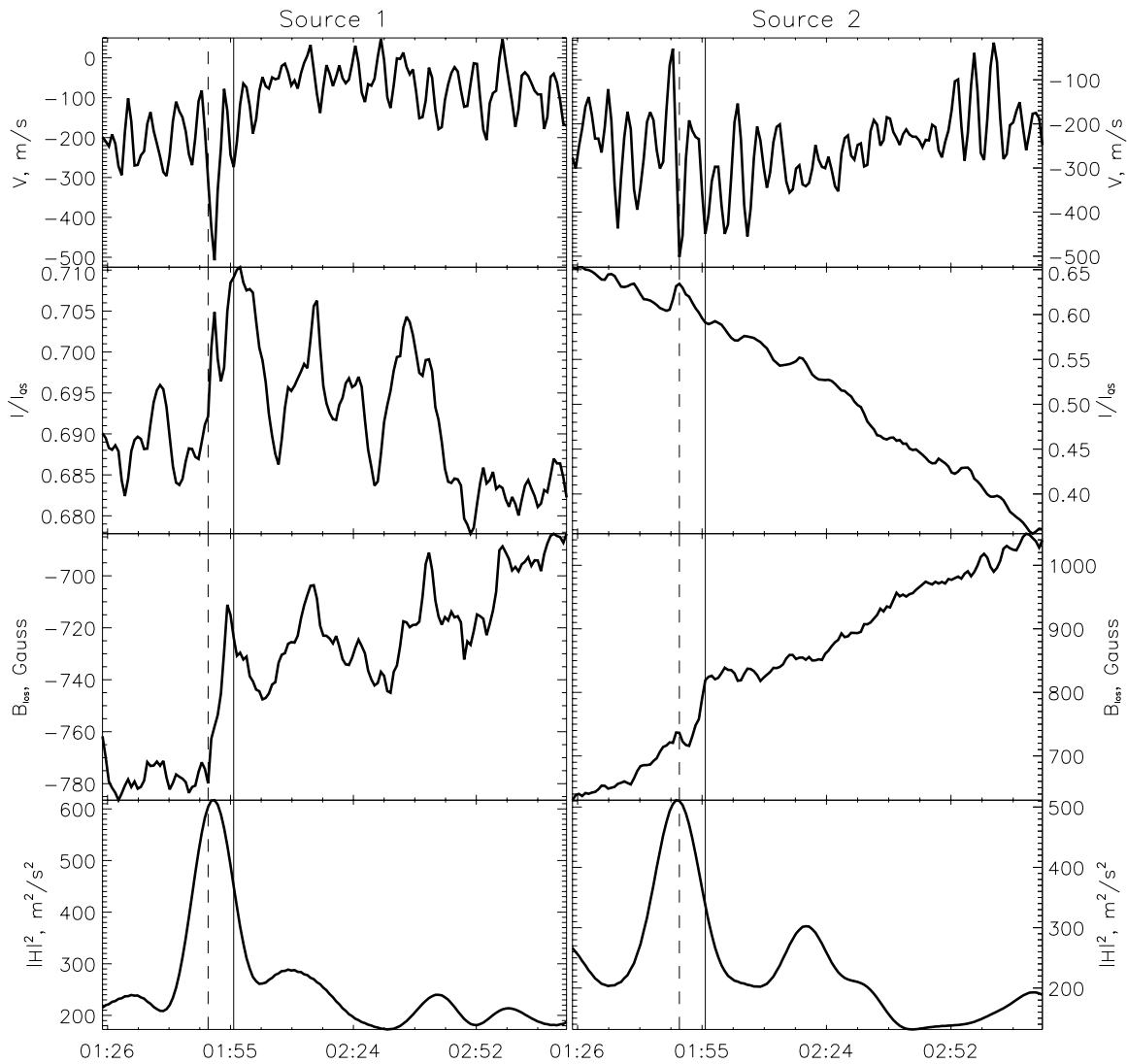
**Figure 3.** AIA 94 Å data showing the evolution of the coronal structure at the onset of the flare, CME, and sunquake. A “loop-like” feature is seen to erupt away from the body of the sigmoid (white arrow in left-hand panels). The stack plot shows a slice across the sigmoid in the direction of the motion of the erupting structure. The erupting structure is indicated by the black arrow in the stack plot (right) obtained along the line shown in the image at 01:48:26 UT. Distance along the line is plotted along the  $y$ -axis in the stack plot, with values for 0 and 1 indicated in the snapshot.

(An animation and a color version of this figure are available in the online journal.)

On 2011 February 15, AR 11158 produced a CME with the eruption being evidenced by the rise of a linear loop-like feature in AIA 94 Å data (see Figure 3 and the online animation). The

CACTus CME catalog observed a halo CME in LASCO C2.<sup>3</sup> The halo CME was first seen in LASCO C2 above the occulting

<sup>3</sup> The CME is actually listed as three separate CMEs: numbers 34, 35, and 36 at [http://sidc.oma.be/cactus/catalog/LASCO/2\\_5\\_0/qkl/2011/02/](http://sidc.oma.be/cactus/catalog/LASCO/2_5_0/qkl/2011/02/).



**Figure 4.** Velocity, intensity, and magnetic field variations integrated over 6 mHz egression kernels (using a 2.5 factor of quiet-Sun egression value as a threshold). The bottom plot is egression rms at 6 mHz. The vertical lines correspond to 01:50 UT and 01:56 UT.

disk to the southwest at 02:24 UT and had a plane-of-sky velocity of between 274 and 469 km s<sup>-1</sup>. The true CME velocity may have been considerably higher as the CME originated near Sun center.

The CME was accompanied by an X2.2-class two ribbon flare and an EUV wave. The flare impulsive phase as seen in the *GOES* 1.0 to 0.8 Å soft X-ray data occurs between 01:46 and 01:56 UT. Integrated HXR emission was observed with *RHESSI* up to approximately 100 keV.  $\gamma$ -ray line emission was not observed by *RHESSI* during the flare. *RHESSI* images obtained with CLEAN procedure were used to provide spatially resolved light curves of the HXR sources in the vicinity of the egression sources and the main flare ribbons (Figure 2).

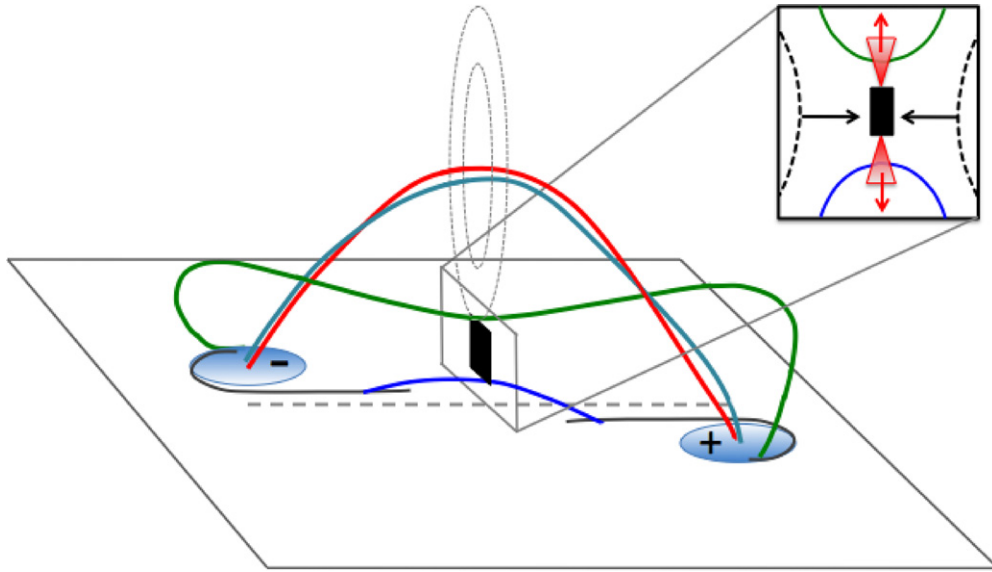
### 3.2. Two Seismic Sources

Computed egression power snapshots for 6, 7, and 10 mHz frequency bands taken around the times of the peak in the acoustic emission are shown in Figure 1. The data are scaled by the mean quiet-Sun egression power value at each frequency and saturated at factor five for better contrast. At 6 mHz one can clearly see the two strong acoustic sources located in the eastern

and western parts of the image. The locations of the sources are plotted as contours over magnetogram and intensity images in the top of Figure 1. The eastern source (Source 1), which corresponds to the acoustic source reported by Kosovichev (2011), is larger and stronger, clearly seen in all frequency bands of computed egression snapshots. The western source (Source 2) is considerably smaller and best seen in the 6 mHz band, becoming faint at 8 mHz.

In order to check the significance of acoustic sources, following Donea et al. (1999), Donea et al. (2000), and Matthews et al. (2011) we have performed rms analysis by spatially integrating egression power over a 140 Mm<sup>2</sup> region obtained via morphological dilation of the egression kernels. The 6 mHz results are shown in the bottom row of Figure 4. It is clear that the acoustic signal at Source 1 is very strong, exceeding the mean value of the series by a factor of up to 2.9. While Source 2 is clearly weaker, the signal at 6 mHz band exceeds the mean by a factor of 2.4.

The largest magnetic, intensity, and velocity variations associated with the CME/flare occurred along the flare-loop footpoints away from the seismic sources. The strongest HXR emission is also situated primarily at the site of the flare loops (Figure 2), with the peaks apparently corresponding to the sites of maximum magnetic field changes, some distance away from the



**Figure 5.** Flux rope scenario: the red line represents a field line at the axis of the erupting flux rope and the teal line represents a field line close to the axis with a right-handed twist. The flux rope cross section is illustrated by the two gray, dashed ovals. As the flux rope erupts, overlying sheared field lines reconnect in the current sheet formed under the rope, producing two sets of field lines; short flare arcade field lines (shown in blue) and longer field lines that become part of the flux rope body, making roughly one turn about the flux rope axis (shown in green). Associated with this reconnection are particle jets represented in red in the inset box. At the photosphere the polarity inversion line (gray dashed) and flare ribbons (gray solid) are indicated.

(A color version of this figure is available in the online journal.)

seismic sources. Weaker HXR emission is seen at the sites of the seismic sources, primarily in the 6–12 and 12–25 keV energy ranges.

At the same time, the evolution of velocity, intensity, and magnetic field, presented in Figure 4, where the values are integrated over the acoustic kernels derived from the 6 mHz egression snapshot, shows significant changes associated with the flare. In the velocity data the downward propagating shocks are seen around 01:49–01:50 UT at both sunquake locations. This is accompanied by a small increase in the intensity and the start of a gradual process of the line-of-sight magnetic field change that is permanent and takes place over several minutes until the time of the peak HXR emission, 01:53–01:54 UT (see Figure 2, top row). However, the presence of the weak HXR emission indicates that such transients could occur in these locations, perhaps in a single pixel (Martínez-Oliveros & Donea 2009); thus we cannot completely rule them out.

In spite of the frequency filtering of the acoustic egression power that limits the measurements of the exact timing of the seismic emission (Donea et al. 1999), the peak emission at both the sources is clearly seen between 01:48 and 01:50 UT, which is in agreement with the time–distance ridge results published in Kosovichev (2011) and velocity transients seen at these locations in HMI data. A comparison with the *RHESSI* light curve data (Figure 2, top row) reveals that the quakes occur during the early stage of the impulsive phase of the flare and before the peak in HXR. The intensities of HXR emission in the locations of ribbons exceeds 100 times those in the locations of seismic sources (compare the two upper rows in Figure 2). Furthermore, Figures 2 (bottom row) and 3 (01:48:26UT snapshot) show that the two seismic sources are copatial with the curved ends of the sigmoid seen in soft X-ray and EUV emission. These are also the locations where EUV changes are first seen around 01:46 UT during the onset of the flare as shown in Figures 1 and 3.

Thus, the observations indicate that the seismic sources occur close to the edge of the flux rope endpoints, and in the region

and where the energy release during the CME is expected to take place (Titov & Démoulin 1999). The onset of the CME is seen in the lower corona as the rise of a loop-like structure shown in Figure 3. The western end of the loop-like structure appears to be rooted in, or very close to, the western seismic source. The loop-like feature first undergoes a slow rise phase followed by a rapid acceleration around 15 February 01:48 UT (see the bottom panel and arrow in Figure 3).

#### 4. DISCUSSION AND CONCLUSIONS

Unlike most previously detected sunquakes, the two seismic sources detected for this event are located away from the sources of very bright HXR emission. This indicates that the sunquakes are not forming at the location of the strongest particle precipitation. Furthermore, both sunquakes apparently occur early on in the impulsive phase of the flare, about three to five minutes before the HXR emission reaches its peak in all of the energy bands. The key to understanding the quakes produced in this event seems to be the magnetic structure of the sigmoid.

The observation of the sigmoid and the erupting loop-like feature gives strong support for the presence of a flux rope before and during the eruption (McKenzie & Canfield 2008; Aulanier et al. 2010; Green et al. 2011). We propose that initial small-scale energy release takes place in a quasi-separatrix layer (QSL) formed at the interface between the flux rope and the surrounding arcade field. This energy release produces the bright patches that later increase in intensity and area to form the flare ribbons. Their J-shapes represent the location of the intersection of this QSL with the lower solar atmosphere (Démoulin et al. 1996).

As the magnetic configuration evolves, the flux rope reaches a stage where it is no longer in equilibrium and a rapid acceleration phase sets in. This is schematically presented in Figure 5. At this point, the X-line under the flux rope collapses into a current sheet facilitating reconnection under the erupting structure

and leading to the two-ribbon flare seen in *SDO* and *Hinode* data. This reconnection brings in surrounding arcade field and produces the flare loops seen in SXR and EUV emission (shown in blue in Figure 5), and also forms helical field lines that wrap around the flux rope body (Titov & Démoulin 1999) and further enhance the speed of the eruption (Zhang et al. 2004; shown in green in Figure 5; see also Figure 1 in Shibata et al. 1995). To confirm this scenario, we note that the footpoints of the newly formed field lines, which wrap around the body of the flux rope, merge with the flaring ribbons during the reconnection process as shown by Démoulin et al. (1996, their Figure 4). Therefore, the J-shaped ribbons represent the end points of all field lines involved in the reconnection.

The timing and the location of the egression emission sources indicate that not only are the seismic responses generated at the feet of the erupting flux rope, but that they are generated close in time to the flare/CME onset. The absence of strong HXR and white light emission at the seismic sources appears to rule out back-warming as the physical mechanism of quake excitation. Absence of strong HXR is in line with the Shibata et al. (1995) model for two ribbon flare. The question then arises as to what mechanism(s) generate each of the seismic sources given their similar timing but different powers, and why they do not appear at the footpoints of the flare arcade. In order to explore these points we consider two avenues: hydrodynamic shocks and magnetic re-structuring.

First, consider the current sheet under the erupting flux rope where two types of particles are ejected: quasi-thermal particles of separatrix jets ejected from the current sheet sides by magnetic diffusion, and electrons and protons dragged from the corona and accelerated in the current sheet to sub-relativistic energies (Zharkova & Agapitov 2009; Siversky & Zharkova 2009). These high energy particles can be ejected either separately or as mixed beams down the field lines of the flare arcade and along the field lines that wrap around the flux rope. Because the current sheet associated with this flux rope model is located in the corona, the density of the dragged-in and accelerated particles is relatively low. Thus, even if particles are accelerated to high energies, they will not produce noticeable HXR or  $\gamma$ -ray emission. The jet particles combined with high energy electrons and protons could produce a mild chromospheric evaporation into the corona resulting in UV emission and a strong hydrodynamic shock in the lower chromosphere/photosphere. These shocks, in turn, could produce seismic emission as shown by hydrodynamic simulations by Zharkova & Zharkov (2007).

Second, we observe a clear and abrupt permanent change in the magnetic field in the strongest seismic source. An abrupt change is also seen in the weaker source, although the field in this region shows a continual increase that begins before the CME/flare onset, making the interpretation of the abrupt change more complex. We also note that both egression sources are located in the penumbral field, which is relatively inclined toward the horizontal before the eruption and must become more vertical when the flux rope erupts and expands. These observations are consistent with the idea of a magnetic jerk in response to coronal restructuring produced by the CME,

but more investigation is required in order to fully understand how these changes relate to the observed seismic emission. In conclusion, the observation of two seismic sources located at the ends of the erupting flux rope highlights the importance of understanding the role of magnetic field topology in the generation of seismic emission, a factor not currently included in existing models. Further studies with high resolution and high cadence data are now needed to determine the mechanisms behind sunquake production in the context of an erupting magnetic configuration and associated particle transport, rather than only focusing on flare-related mechanisms.

The authors thank Dr. B. Kliem for many useful discussions.

## REFERENCES

- Aulanier, G., Török, T., Démoulin, P., & DeLuca, E. E. 2010, *ApJ*, **708**, 314  
 Bárta, M., Büchner, J., Karlický, M., & Kotrč, P. 2011, *ApJ*, **730**, 47  
 Besliu-Ionescu, D., Donea, A., Cally, P., & Lindsey, C. 2005, in Proc. 11th European Solar Physics Meeting. The Dynamic Sun: Challenges for Theory and Observations, ed. D. Danesy et al. (ESA Special Publication, Vol. 600; Noordwijk: ESA), 111  
 Cally, P. S. 2000, *Sol. Phys.*, **192**, 395  
 Démoulin, P., Priest, E. R., & Lonić, D. P. 1996, *J. Geophys. Res.*, **101**, 7631  
 Donea, A. 2011, *Space Sci. Rev.*, **158**, 451  
 Donea, A., Besliu-Ionescu, D., Cally, P. S., Lindsey, C., & Zharkova, V. V. 2006a, *Sol. Phys.*, **239**, 113  
 Donea, A., Braun, D. C., & Lindsey, C. 1999, *ApJ*, **513**, L143  
 Donea, A., & Lindsey, C. 2005, *ApJ*, **630**, 1168  
 Donea, A. C., Besliu-Ionescu, D., Cally, P., & Lindsey, C. 2006b, in ASP Conf. Ser. 354, Solar MHD Theory and Observations: A High Spatial Resolution Perspective, ed. J. Leibacher, R. F. Stein, & H. Uitenbroek (San Francisco, CA: ASP), 204  
 Donea, A. C., Lindsey, C., & Braun, D. C. 2000, *Sol. Phys.*, **192**, 321  
 Golub, L., Deluca, E., Austin, G., et al. 2007, *Sol. Phys.*, **243**, 63  
 Green, L. M., & Kliem, B. 2009, *ApJ*, **700**, L83  
 Green, L. M., Kliem, B., & Wallace, A. J. 2011, *A&A*, **526**, A2  
 Hudson, H. S., Fisher, G. H., & Welsch, B. T. 2008, in ASP Conf. Ser. 383, Subsurface and Atmospheric Influences on Solar Activity, ed. R. Howe et al. (San Francisco, CA: ASP), 221  
 Kosovichev, A. G. 2006, *Sol. Phys.*, **238**, 1  
 Kosovichev, A. G. 2007, *ApJ*, **670**, L65  
 Kosovichev, A. G. 2011, *ApJ*, **734**, L15  
 Kosovichev, A. G., & Zharkova, V. V. 1998, *Nature*, **393**, 317  
 Kosovichev, A. G., & Zharkova, V. V. 2001, *ApJ*, **550**, L105  
 Lin, R. P., Dennis, B. R., Hurford, G. J., et al. 2002, *Sol. Phys.*, **210**, 3  
 Lindsey, C., & Braun, D. C. 2000, *Sol. Phys.*, **192**, 261  
 Martínez-Oliveros, J. C., & Donea, A.-C. 2009, *MNRAS*, **395**, L39  
 Martínez-Oliveros, J. C., Donea, A., Cally, P. S., & Moradi, H. 2008, *MNRAS*, **389**, 1905  
 Matthews, S. A., Zharkov, S., & Zharkova, V. V. 2011, *ApJ*, **739**, 71  
 McKenzie, D. E., & Canfield, R. C. 2008, *A&A*, **481**, L65  
 Shibata, K., Masuda, S., Shimojo, M., et al. 1995, *ApJ*, **451**, L83  
 Siversky, T. V., & Zharkova, V. V. 2009, *A&A*, **504**, 1057  
 Sudol, J. J., & Harvey, J. W. 2005, *ApJ*, **635**, 647  
 Titov, V. S., & Démoulin, P. 1999, *A&A*, **351**, 707  
 van Ballegoijen, A. A., & Martens, P. C. H. 1989, *ApJ*, **343**, 971  
 Wolff, C. L. 1972, *ApJ*, **176**, 833  
 Zhang, J., Dere, K. P., Howard, R. A., & Vourlidas, A. 2004, *ApJ*, **604**, 420  
 Zharkov, S., Zharkova, V. V., & Matthews, S. A. 2011, *ApJ*, **739**, 70  
 Zharkova, V. V., & Agapitov, O. V. 2009, *J. Plasma Phys.*, **75**, 159  
 Zharkova, V. V., & Zharkov, S. I. 2007, *ApJ*, **664**, 573  
 Zharkova, V. V., Zharkov, S. I., Ipson, S. S., & Benkhalil, A. K. 2005, *J. Geophys. Res. (Space Phys.)*, **110**, 8104