

Northumbria Research Link

Citation: Goussev, Arseni and Richter, Klaus (2013) Scattering of quantum wave packets by shallow potential islands: a quantum lens. Physical Review E (PRE), 87 (5). 052918-052924. ISSN 1539-3755

Published by: American Physical Society

URL: <http://dx.doi.org/10.1103/PhysRevE.87.052918>
<<http://dx.doi.org/10.1103/PhysRevE.87.052918>>

This version was downloaded from Northumbria Research Link:
<http://nrl.northumbria.ac.uk/12704/>

Northumbria University has developed Northumbria Research Link (NRL) to enable users to access the University's research output. Copyright © and moral rights for items on NRL are retained by the individual author(s) and/or other copyright owners. Single copies of full items can be reproduced, displayed or performed, and given to third parties in any format or medium for personal research or study, educational, or not-for-profit purposes without prior permission or charge, provided the authors, title and full bibliographic details are given, as well as a hyperlink and/or URL to the original metadata page. The content must not be changed in any way. Full items must not be sold commercially in any format or medium without formal permission of the copyright holder. The full policy is available online: <http://nrl.northumbria.ac.uk/policies.html>

This document may differ from the final, published version of the research and has been made available online in accordance with publisher policies. To read and/or cite from the published version of the research, please visit the publisher's website (a subscription may be required.)

www.northumbria.ac.uk/nrl



Scattering of quantum wave packets by shallow potential islands: A quantum lens

Arseni Goussev^{1,2} and Klaus Richter³

¹*Department of Mathematics and Information Sciences,
Northumbria University, Newcastle Upon Tyne, NE1 8ST, United Kingdom*

²*Max Planck Institute for the Physics of Complex Systems,
Nöthnitzer Straße 38, D-01187 Dresden, Germany*

³*Institute for Theoretical Physics, University of Regensburg, D-93040 Regensburg, Germany*

(Dated: February 14, 2013)

We consider the problem of quantum scattering of a localized wave packet by a weak Gaussian potential in two spatial dimensions. We show that, under certain conditions, this problem bears close analogy with that of focusing (or defocusing) of light rays by a thin optical lens: Quantum interference between straight paths yields the same lens equation as for refracted rays in classical optics.

PACS numbers: 03.65.Nk, 03.65.Sq, 42.25.Fx

I. INTRODUCTION

The intrinsic connection between the motion of classical particles on one hand and the propagation of quantum matter waves on the other has occupied minds of scientists since the early days of quantum theory. De Broglie was one of the first to realize that “for both matter and radiations . . . it is necessary to introduce the corpuscle concept and the wave concept at the same time” [1]. Subsequently, invaluable contributions of Ehrenfest, Van Vleck, Feynman, Gutzwiller, Maslov, among many others, shaped our current understanding of quantum wave propagation in terms of interference of classical trajectories. However, a number of important questions concerning quantum-classical correspondence remain open. These questions fall under the scope of the area of mathematical physics known as *quantum chaos* [2–4].

The motion of a classical particle can be conveniently described by means of a phase-space trajectory. The Heisenberg’s uncertainty principle however does not allow for the notion of the classical trajectory to be directly carried over to quantum theory: the particle’s position and momentum can not be specified simultaneously.

One natural extension of the classical concept of a point in the phase space is provided by a localized quantum wave packet that can be parametrized by its mean position and momentum, and dispersion quantifying the phase-space extent of the wave packet. According to the Ehrenfest theorem [5], the time evolution of the mean position and momentum is governed, for short enough times, by the classical equations of motion. In other words, the wave packet center follows the corresponding classical trajectory.

An issue of the wave packet spreading, i.e., how the dispersion depends on time, is however much more complex. Loosely speaking, there are two main mechanisms of the spreading: (i) a classical-like broadening of the wave packet due to forces exerted by an external potential, and (ii) an intrinsically quantum-mechanical spreading dictated by the uncertainty principle. Due to the inter-

ference nature of quantum dynamics, the overall spreading is not a simple “sum” of the two contributions, but rather a more intricate process.

A natural question arises: is there an *intuitive* and, at the same time, *quantitative* theoretical description of the phenomenon of quantum spreading? In this paper, we develop such a description, based on the short-wavelength approximation to quantum dynamics, for the simple system of a two-dimensional quantum wave packet scattered by a weak Gaussian potential. In particular, we show that the quantum scattering process bears a close mathematical analogy with the phenomenon of focusing (or defocusing) of light rays by a thin lens, and can be described using the “language” of geometrical optics. Interestingly, on the quantum side the use of the Eikonal approximation [6], i.e. including interference of *straight* paths, yields the same thin lens equation as derived in classical optics from *refracted* light rays.

Our theoretical approach provides an intuitive picture of the wave packet spreading [7, 8], and its quantitative predictions are found in good agreement with results of an “exact” numerical solution of the time-dependent Schrödinger equation.

II. THEORY

We consider a quantum particle of mass m that evolves in the two-dimensional position space under the influence of the external potential

$$V(\mathbf{q}) = V_0 e^{-\mathbf{q} \cdot \mathbf{A} \mathbf{q}}. \quad (1)$$

Here, V_0 quantifies the strength of the potential, \mathbf{q} is a column vector representing the particle’s position, and \mathbf{A} is a 2-by-2 orthogonal matrix with eigenvalues a_1 and a_2 corresponding, respectively, to orthonormal (column) eigenvectors \mathbf{e}_1 and \mathbf{e}_2 . In other words,

$$\mathbf{A} = (\mathbf{e}_1 \ \mathbf{e}_2) \text{diag}(a_1, a_2) (\mathbf{e}_1 \ \mathbf{e}_2)^T, \quad (2)$$

where $|\mathbf{e}_1| = |\mathbf{e}_2| = 1$ and $\mathbf{e}_1 \cdot \mathbf{e}_2 = 0$. Hereinafter, the dot “.” stands for the scalar product, and the superscript “T” denotes the matrix transposition. Equation (1) describes a Gaussian potential “island” centered at $\mathbf{q} = \mathbf{0}$, see Fig. 1. The spatial extent of the island is characterized by the length $l_1 = 1/\sqrt{a_1}$ in the direction of the vector \mathbf{e}_1 and by $l_2 = 1/\sqrt{a_2}$ in the direction of \mathbf{e}_2 .

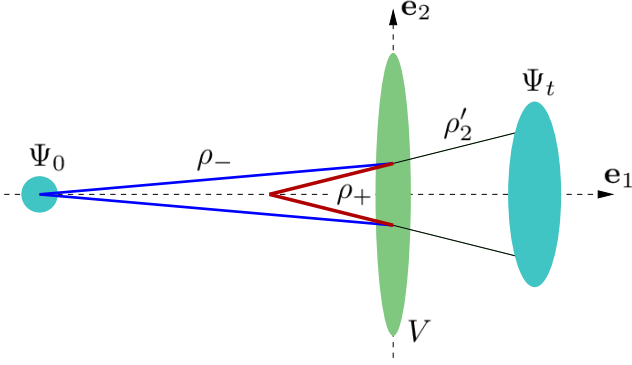


FIG. 1: (Color online) Schematic illustration of the scattering system under consideration.

The dynamics of the quantum particle is fully described by its time-dependent wave function, $\Psi_t(\mathbf{q})$. The latter is related to the initial wave function, $\Psi_0(\mathbf{q})$, by means of a propagator K in accordance with

$$\Psi_t(\mathbf{q}) = \int d\mathbf{q}' K(\mathbf{q}, \mathbf{q}'; t) \Psi_0(\mathbf{q}'). \quad (3)$$

Here, the \mathbf{q}' -integration runs over the whole two-dimensional plane. In general, the propagator K is determined by solving the time-dependent Schrödinger equation,

$$\left(i\hbar \frac{\partial}{\partial t} + \frac{\hbar^2}{2m} \nabla_{\mathbf{q}}^2 - V(\mathbf{q}) \right) K(\mathbf{q}, \mathbf{q}'; t) = 0, \quad (4)$$

subject to appropriate boundary and initial conditions, e.g., see Ref. [9]. Generally, this task is analytically formidable, and one is left to resort to numerical computations. In certain cases however analytical progress is made possible by constructing “sensible” approximations to the propagator. In this paper, we focus on one such approximation commonly referred to as *semiclassics*.

The semiclassical (or short-wavelength) approximation of the propagator $K(\mathbf{q}, \mathbf{q}'; t)$ is formulated in terms of *classical* trajectories γ that start at the point \mathbf{q}' at time 0 and end at \mathbf{q} at time t . More precisely, $\gamma = \{\mathbf{r}(\tau), \tau \in [0, t]\}$, such that $m \frac{d^2 \mathbf{r}}{d\tau^2} + \nabla V(\mathbf{r}) = \mathbf{0}$ with $\mathbf{r}(0) = \mathbf{q}'$ and $\mathbf{r}(t) = \mathbf{q}$. The approximate propagator, commonly referred to as the Van Vleck-Gutzwiller propagator, can be written as [2]

$$K(\mathbf{q}, \mathbf{q}', t) = \frac{\sqrt{D_\gamma}}{2\pi i \hbar} \exp \left(\frac{i}{\hbar} S_\gamma - \frac{i\pi}{2} \nu_\gamma \right), \quad (5)$$

where

$$S_\gamma \equiv S[\mathbf{r}](t) = \int_0^t d\tau \left\{ \frac{m}{2} \left(\frac{d\mathbf{r}}{d\tau}(\tau) \right)^2 - V(\mathbf{r}(\tau)) \right\} \quad (6)$$

is Hamilton’s principle function along the trajectory γ ,

$$D_\gamma = |\det(-\nabla_{\mathbf{q}'} \nabla_{\mathbf{q}} S_\gamma)| \quad (7)$$

is the stability factor of γ , and ν_γ is the so-called Maslov index, counting the number of conjugate points along γ ; as far as our problem is concerned, the Maslov index is identically zero, $\nu_\gamma = 0$.

The approximation (5) is known to be reliable when applied to wave functions $\Psi_0(\mathbf{q})$ representing a quantum particle of sufficiently high kinetic energy E_0 . We additionally assume that the Gaussian potential, given by Eq. (1), is weak compared to the particle’s kinetic energy, $|V_0| \ll E_0$. The validity of this condition is at the heart of our “shallow potential island” approximation corresponding to the Eikonal approximation in scattering theory [6]. In this case (see Appendix A), S_γ can be well approximated by S_{γ_0} , where γ_0 is the straight, free-particle trajectory leading from \mathbf{q}' to \mathbf{q} in time t , i.e., $\gamma_0 = \{\mathbf{q}\tau/t + \mathbf{q}'(1 - \tau/t), \tau \in [0, t]\}$. Thus, we write

$$S_\gamma \simeq S_{\gamma_0} = \frac{m}{2t} |\mathbf{q} - \mathbf{q}'|^2 - \int_0^t d\tau V \left(\mathbf{q}' + \frac{\tau}{t} (\mathbf{q} - \mathbf{q}') \right). \quad (8)$$

The integral in the right-hand side of Eq. (8) can be straightforwardly evaluated to equal

$$\frac{\sqrt{\pi} V_0 t}{2\mathcal{A}} \exp \left(-\frac{(\mathbf{q} \cdot \mathbf{A}\mathbf{q})(\mathbf{q}' \cdot \mathbf{A}\mathbf{q}') - (\mathbf{q} \cdot \mathbf{A}\mathbf{q}')^2}{\mathcal{A}^2} \right) \times \left[\operatorname{erf} \left(\frac{\mathbf{q} \cdot \mathbf{A}(\mathbf{q} - \mathbf{q}')}{\mathcal{A}} \right) - \operatorname{erf} \left(\frac{\mathbf{q}' \cdot \mathbf{A}(\mathbf{q} - \mathbf{q}')}{\mathcal{A}} \right) \right] \quad (9)$$

with

$$\mathcal{A} \equiv \sqrt{(\mathbf{q} - \mathbf{q}') \cdot \mathbf{A}(\mathbf{q} - \mathbf{q}')}. \quad (10)$$

Expression (9), and therefore Eq. (8), can be further simplified by taking into account the identity

$$(\mathbf{q} \cdot \mathbf{A}\mathbf{q})(\mathbf{q}' \cdot \mathbf{A}\mathbf{q}') - (\mathbf{q} \cdot \mathbf{A}\mathbf{q}')^2 = |\mathbf{q} \times \mathbf{q}'|^2 \det \mathbf{A}, \quad (11)$$

where “ \times ” denotes the vector product. This yields

$$S_\gamma \simeq \frac{m}{2t} |\mathbf{q} - \mathbf{q}'|^2 - \frac{\sqrt{\pi} V_0 t}{2\mathcal{A}} \exp \left(-\frac{|\mathbf{q} \times \mathbf{q}'|^2 \det \mathbf{A}}{\mathcal{A}^2} \right) \times \left[\operatorname{erf} \left(\frac{\mathbf{q} \cdot \mathbf{A}(\mathbf{q} - \mathbf{q}')}{\mathcal{A}} \right) - \operatorname{erf} \left(\frac{\mathbf{q}' \cdot \mathbf{A}(\mathbf{q} - \mathbf{q}')}{\mathcal{A}} \right) \right]. \quad (12)$$

A substitution of Eq. (12) into Eq. (5) leads to an explicit, closed-form expression for the semiclassical propagator, $K(\mathbf{q}, \mathbf{q}', t)$, and, therefore, provides the complete solution of the time-dependent scattering problem in the short-wavelength regime.

The expression for the propagator, $K(\mathbf{q}, \mathbf{q}', t)$, becomes especially simple and allows for an intuitive interpretation in the following special case. Let us consider a setup, in which the “receiver” \mathbf{q} and the “source” \mathbf{q}' lie on the opposite sides of and at almost the same distance, large compared to l_1 , from the center of the Gaussian scattering potential, and in which the vector $(\mathbf{q} - \mathbf{q}')$ is nearly aligned with one of the principal directions (taken, for concreteness, to be \mathbf{e}_1) of the potential island. In other words, we are interested in the asymptotic form of the function $K(\mathbf{q}, \mathbf{q}', t)$ in the case that

$$\mathbf{q} = L\mathbf{e}_1 + \boldsymbol{\xi}, \quad \mathbf{q}' = -L\mathbf{e}_1 + \boldsymbol{\xi}' \quad (13)$$

and

$$|\boldsymbol{\xi}|, |\boldsymbol{\xi}'|, l_1 \ll L. \quad (14)$$

Substituting Eq. (13) into Eqs. (10) and (12), taking into account that $\text{erf}(\pm z) \rightarrow \pm 1$ as $z \rightarrow +\infty$, and keeping only terms to the leading order in $|\boldsymbol{\xi}|/L$ and $|\boldsymbol{\xi}'|/L$ in the argument of the exponential function, we obtain

$$S_\gamma \simeq \frac{m}{2t} |2L\mathbf{e}_1 + \boldsymbol{\xi} - \boldsymbol{\xi}'|^2 - \frac{\sqrt{\pi} l_1}{2} \frac{V_0 t}{L} \exp\left(-\frac{|\mathbf{e}_1 \times (\boldsymbol{\xi} + \boldsymbol{\xi}')|^2}{(2l_2)^2}\right). \quad (15)$$

Then, using the basis representations $\boldsymbol{\xi} = \xi_1 \mathbf{e}_1 + \xi_2 \mathbf{e}_2$ and $\boldsymbol{\xi}' = \xi'_1 \mathbf{e}_1 + \xi'_2 \mathbf{e}_2$ in Eq. (15), and further assuming that

$$\xi_2, \xi'_2 \ll l_2, \quad (16)$$

we write, approximately,

$$S_\gamma \simeq -\frac{\sqrt{\pi} l_1}{2} \frac{V_0 t}{L} + S_\gamma^{(1)} + S_\gamma^{(2)}, \quad (17)$$

where

$$S_\gamma^{(1)} = \frac{m}{2t} (2L + \xi_1 - \xi'_1)^2 \quad (18)$$

and

$$S_\gamma^{(2)} = \frac{m}{2t} (\xi_2 - \xi'_2)^2 + \frac{\sqrt{\pi} l_1}{8} \frac{V_0 t}{L(l_2)^2} (\xi_2 + \xi'_2)^2. \quad (19)$$

In view of Eqs. (17–19), the stability factor (7) along the trajectory γ can be written as $D_\gamma \simeq D_\gamma^{(1)} D_\gamma^{(2)}$, with $D_\gamma^{(1)} = |-\partial_{\xi_1} \partial_{\xi'_1} S_\gamma^{(1)}| = m/t$ and $D_\gamma^{(2)} = |-\partial_{\xi_2} \partial_{\xi'_2} S_\gamma^{(2)}| = m/t - \sqrt{\pi} l_1 V_0 t / (4L(l_2)^2)$, provided that

$$t^2 \ll \frac{m(l_2)^2 L}{|V_0| l_1}. \quad (20)$$

In fact, Eq. (20) states a necessary condition for Eq. (19) to constitute a “healthy” perturbative expansion of $S_\gamma^{(2)}$ in powers of V_0 .

The full semiclassical propagator, Eq. (5), can now be written as

$$K(\mathbf{q}, \mathbf{q}', t) \simeq \exp\left(-i \frac{\sqrt{\pi} l_1 V_0 t}{2} \frac{V_0 t}{L} \frac{1}{\hbar}\right) \times K_0(L + \xi_1, -L + \xi'_1; t) K_V(\xi_2, \xi'_2; t), \quad (21)$$

where

$$K_0(z, z', \tau) \equiv \sqrt{\frac{m}{2\pi i \hbar \tau}} \exp\left(i \frac{m}{2\hbar \tau} (z - z')^2\right) \quad (22)$$

is the free-particle propagator describing the motion of the particle in the \mathbf{e}_1 -direction, while

$$K_V(z, z', \tau) \equiv K_0(z, z', \tau) \sqrt{1 - \frac{\sqrt{\pi} l_1}{4} \frac{V_0 \tau^2}{L m (l_2)^2}} \times \exp\left(i \frac{\sqrt{\pi} l_1 V_0 \tau}{8} \frac{V_0 \tau}{L} \frac{(z + z')^2}{(l_2)^2}\right) \quad (23)$$

accounts for the wave function spreading in the orthogonal, \mathbf{e}_2 -direction. Clearly, $K_V \rightarrow K_0$ as $V_0 \rightarrow 0$, recovering the free-particle limit.

We now observe that

$$K_V(z, z', \tau) = \int_{-\infty}^{+\infty} d\zeta K_0(z, \zeta, \tau/2) \times \exp\left[i \frac{\sqrt{\pi} l_1 V_0 \tau}{2} \frac{V_0 \tau}{L} \frac{1}{\hbar} \left(1 - \frac{\sqrt{\pi} l_1}{4} \frac{V_0 \tau^2}{L m (l_2)^2}\right)^{-1} \frac{\zeta^2}{(l_2)^2}\right] \times K_0(\zeta, z', \tau/2). \quad (24)$$

Equation (24) is an identity, and can be verified straightforwardly by evaluating the Gaussian integral in the right-hand side. Then, after Eq. (20) is taken into account, Eq. (24) reduces to

$$K_V(z, z', \tau) \simeq \int_{-\infty}^{+\infty} d\zeta K_0(z, \zeta, \tau/2) \times \exp\left[i \frac{\sqrt{\pi} l_1 V_0 \tau}{2} \frac{V_0 \tau}{L} \frac{\zeta^2}{\hbar (l_2)^2}\right] K_0(\zeta, z', \tau/2). \quad (25)$$

The physical picture offered by Eq. (25) is as follows. The propagator K_V , evolving a quantum state during time τ , can be viewed as a result of three consecutive operations: (i) a free-particle propagation during time $\tau/2$, (ii) an instantaneous phase change, or “kick”, of the quantum state, and (iii) another free-particle propagation during $\tau/2$. This interpretation, and the physical meaning of the kick operator, becomes apparent when the evolving quantum state is given by a Gaussian wave packet. To this end, we consider as initial state the two-dimensional wave packet

$$\Psi_0(\xi'_1, \xi'_2) \equiv \psi_0^{(1)}(\xi'_1; \rho_1) \psi_0^{(2)}(\xi'_2; \rho_2) \quad (26)$$

with

$$\psi_0^{(1)}(z; \rho) \equiv \left(\frac{1}{\pi \sigma^2}\right)^{\frac{1}{4}} \exp\left[i \frac{mv}{\hbar} \left(\frac{z^2}{2\rho} + z\right)\right], \quad (27)$$

$$\psi_0^{(2)}(z; \rho) \equiv \left(\frac{1}{\pi \sigma^2}\right)^{\frac{1}{4}} \exp\left(i \frac{mv}{\hbar} \frac{z^2}{2\rho}\right). \quad (28)$$

Here, ρ_1 and ρ_2 (usually termed radii of curvature [10]) are two, generally complex-valued, parameters. The real-valued function $\sigma = \sigma(\rho)$, defined in accordance with

$$\frac{1}{\sigma^2} \equiv \frac{mv}{\hbar} \Im \left(\frac{1}{\rho} \right) = -\frac{mv}{\hbar} \frac{\Im \rho}{|\rho|^2}, \quad (29)$$

quantifies the position-space dispersion of the wave packet. Furthermore, v specifies the average velocity (and mv the average momentum) of the particle.

Now, acting with the propagator (21) on the initial state (26), which is assumed to be spatially localized around the position vector $\mathbf{q}' = -L\mathbf{e}_1$ (or around the origin in the ξ' -coordinate frame), we obtain the quantum state after time t locally, in the vicinity of the point $\mathbf{q} = L\mathbf{e}_1$ (or around the origin in the ξ -coordinate frame):

$$\Psi_t(\xi_1, \xi_2) \simeq e^{-i\frac{\sqrt{\pi}}{2}\frac{l_1}{L}\frac{v_0 t}{\hbar}} \psi_t^{(1)}(\xi_1; \rho_1) \psi_t^{(2)}(\xi_2; \rho_2), \quad (30)$$

where

$$\psi_t^{(1)}(z; \rho) \equiv \int_{-\infty}^{+\infty} d\zeta K_0(L+z, -L+\zeta, t) \psi_0^{(1)}(\zeta; \rho), \quad (31)$$

$$\psi_t^{(2)}(z; \rho) \equiv \int_{-\infty}^{+\infty} d\zeta K_V(z, \zeta, t) \psi_0^{(2)}(\zeta; \rho). \quad (32)$$

As we are concerned with the semiclassical limit, it is reasonable to expect that, in the course of its time evolution, the quantum wave packet remains concentrated around the corresponding classical trajectory. This means that the center of the wave packet, starting from the point $-L\mathbf{e}_1$ at time 0, reaches the point $L\mathbf{e}_1$ in time t , such that

$$vt = 2L. \quad (33)$$

It is at this instant that $\Psi_t(\xi_1, \xi_2)$ is localized around the origin in the ξ -coordinate frame, and that the propagator approximation, given by Eq. (21), proves the most useful.

Fixing the time t in accordance with Eq. (33) and evaluating the Gaussian integral in Eq. (31), we obtain

$$\psi_t^{(1)}(z; \rho_1) = e^{i\phi_1} \psi_0^{(1)}(z; \rho_1 + vt), \quad (34)$$

where $\phi_1 = E_0 t / \hbar - (1/2) \arg(1 + vt/\rho_1)$, and

$$E_0 \equiv \frac{mv^2}{2}, \quad (35)$$

denoting the kinetic energy of the corresponding classical particle. The physical interpretation of Eq. (34) is that the \mathbf{e}_1 -component of the wave packet retains its Gaussian shape, as its center travels in space on top of the corresponding classical trajectory (and in agreement with the Ehrenfest theorem). The spreading of the \mathbf{e}_1 -component of the wave packet is entirely described by the linear transformation of the corresponding radius of curvature, $\rho_1 \rightarrow \rho_1 + vt$, and, in the weak potential limit, this spreading is not affected by the external potential.

We now focus on the time evolution of the \mathbf{e}_2 -component of the wave packet. As before, we keep the time t fixed in accordance with Eq. (33). Substituting Eq. (25) into Eq. (32), and successively evaluating two Gaussian integrals, we obtain

$$\psi_t^{(2)}(z; \rho_2) = e^{i\phi_2} \psi_0^{(2)}(z; \rho'_2), \quad (36)$$

where $\rho'_2 = \rho_+ + vt/2$,

$$\frac{1}{\rho_+} = \frac{1}{\rho_-} + \frac{1}{f}, \quad (37)$$

$\rho_- = \rho_2 + vt/2$,

$$f \equiv \frac{1}{\sqrt{\pi}} \frac{E_0}{V_0} \frac{(l_2)^2}{l_1}, \quad (38)$$

and $\phi_2 = -(1/2)[\arg(\rho'_2/\rho_+) + \arg(\rho_-/\rho_2)]$.

The physical picture of the wave packet spreading, offered by the central Eqs. (36–38), bears close analogy with the focusing (or defocusing) of light rays by a thin optical lens. Indeed, the well-known thin lens equation, $[\text{object distance}]^{-1} + [\text{image distance}]^{-1} = [\text{focal length}]^{-1}$, can be readily recovered from Eq. (37) by interpreting $-\rho_-$ and ρ_+ as the “distances” from, respectively, the object and its image to a lens of the focal length f ; the role of the lens is played here by the Gaussian potential island, see Fig. 1.

It is important to point out that the above analogy between the wave packet scattering in quantum mechanics and the ray focusing in optics is not a trivial one: in the quantum-mechanical case, the “distances” $-\rho_-$ and ρ_+ are intrinsically complex-valued and can only be related to the true distances, encountered in optics, in a nonlinear way.

Finally, we note that our simple wave-packet-propagation construction can be generalized to arbitrary times t . This generalization can be summarized as follows. Suppose that the initial wave packet is centered around a point with coordinates $(Q, 0)$, where $Q < 0$, and that the initial wave function is given by the product $\psi_0^{(1)}(q_1 - Q; \rho_1) \psi_0^{(2)}(q_2; \rho_2)$. Then, at a later time t , the wave function is given, up to an overall phase factor, by $\psi_0^{(1)}(q_1 - Q - vt; \rho_1 + vt) \psi_0^{(2)}(q_2; \rho'_2)$, where

$$\rho'_2 = \begin{cases} \rho_2 + vt, & t < |Q|/v \\ \rho_+ + v(t - |Q|/v), & t \geq |Q|/v \end{cases} \quad (39)$$

and ρ_+ is determined from Eq. (37) with $\rho_- = \rho_2 + |Q|$.

III. NUMERICAL CONFIRMATION

We now confirm the validity of the “quantum lens” formulae, given by Eqs. (37), (38), and (39), by comparing their predictions to results of numerical simulations. The latter were performed by solving the time-dependent Schrödinger equation, governing the evolution of the wave packet, numerically, using the method

of expanding the propagator in a series of Chebyshev polynomials of the Hamiltonian. The reader is referred to Refs. [11–13] for a comprehensive description of the method and its implementations.

The concrete system that we consider is schematically illustrated in Fig. 1 and described by the following set of parameters. Hereinafter, we adopt atomic units, $\hbar = m = 1$. The external Gaussian potential, Eq. (1), is characterized by $l_1 = 0.1$ and $l_2 = 1$, and the potential strength V_0 plays the role of a variable parameter, with values ranging between 10 and 40. The initial state of the particle is given by the wave function $\psi_0^{(1)}(q_1 - Q; \rho_1) \psi_0^{(2)}(q_2; \rho_2)$ with $Q = -0.8$, $v = 60$, and $\rho_1 = \rho_2 = -i(mv/\hbar)(\sigma_0)^2$, where $\sigma_0 = 0.1$ quantifies the initial position-space dispersion of the wave packet, cf. Eq. (29). Note that the kinetic energy of the classical particle $E_0 = mv^2/2 = 1800$ is large compared to the strength of the external potential.

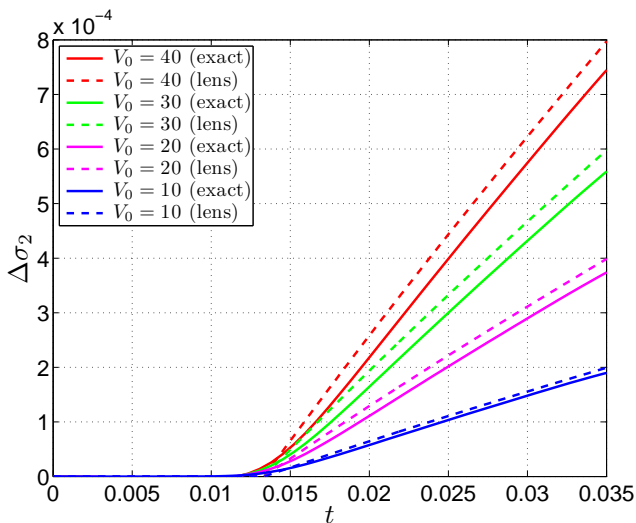


FIG. 2: (Color online) Spreading of the wave packet in the direction orthogonal to the direction of propagation. See text for details.

Our aim is to study the wave packet spreading in the direction orthogonal to the propagation direction. This spreading is given by the time-dependence of the dispersion along the \mathbf{e}_2 -axis,

$$\sigma_2 = \sqrt{2 \int d\mathbf{q} (q_2)^2 |\Psi_t(\mathbf{q})|^2}. \quad (40)$$

(Note that, due to the symmetry of $\Psi_t(\mathbf{q})$ under the reflection $q_2 \rightarrow -q_2$, the expectation value of q_2 is zero, i.e., $\int d\mathbf{q} q_2 |\Psi_t(\mathbf{q})|^2 = 0$.) For our choice of the initial state, $\sigma_2 = \sigma_0$ at $t = 0$, and σ_2 increases as a function of time. In the limit $V_0 = 0$, this increase is determined by the free-particle spreading, $\sigma_2^{\text{free}} = \sigma(\rho_2 + vt)$, with the function $\sigma(\rho)$ defined by Eq. (29). A straightforward

calculation yields

$$\sigma_2^{\text{free}} = \sqrt{(\sigma_0)^2 + \left(\frac{\hbar t}{m\sigma_0}\right)^2}. \quad (41)$$

In the case $V_0 \neq 0$, the external potential causes additional spreading that can be quantified by

$$\Delta\sigma_2 \equiv \sigma_2 - \sigma_2^{\text{free}}. \quad (42)$$

Figure 2 shows the dependence of $\Delta\sigma_2$ on time t for four different potential strengths, $V_0 = 10$ (blue), 20 (magenta), 30 (green), and 40 (red). The solid curves represent the results of the “exact” numerical solution of the time-dependent Schrödinger equation, while the dashed curves show the analytical “lens” approximation, namely $\sigma(\rho'_2) - \sigma_2^{\text{free}}$ with ρ'_2 , calculated in accordance with Eqs. (39), (37), and (38). As expected, $\Delta\sigma_2 \simeq 0$ for $t \lesssim |Q|/v \simeq 0.013$, corresponding to the time that it takes for the classical particle to reach the potential island. Figure 2 shows the theoretical predictions to be in a reasonable agreement with the numerical results. It also confirms that the agreement improves as the potential strength is decreased.

IV. DISCUSSION AND CONCLUSIONS

In this paper, we have constructed an approximate analytical solution to the problem of a scattering of a localized quantum wave packet by a weak Gaussian potential. Our solution is valid in the semiclassical regime, in which the particle’s de Broglie wavelength can be considered short compared to all other length scales of the system. We have shown that the quantum scattering process is closely analogous to the phenomenon of focusing (or defocusing) of light rays by a thin optical lens. In particular, the mathematical formula quantifying the wave packet spreading, Eq. (37), is largely equivalent to the thin lens formula of geometrical optics. The main difference between the thin lens formula in optics and Eq. (37) is that the former operates with true real-valued distances from the lens to the object and to the image, while the “distances” ρ_- and ρ_+ entering Eq. (37) are intrinsically complex-valued. It is only in the classical limit, $mv/\hbar \rightarrow \infty$, that ρ_- and ρ_+ become real-valued, and that the optical thin lens formula is recovered.

It is instructive to further compare the ray optics picture with our quantum mechanical result. The thin lens formula in optics, which is the classical limit of Eq. (37), effectively describes the deflection, or bending, of light rays (classical trajectories), induced by the lens (external potential). However, only straight, unbent trajectories have been used in our semiclassical derivation of Eq. (37). This seeming paradox is resolved by the following argument, originally presented in Ref. [14] and for readers’ convenience reproduced in Appendix A. The main building block of the semiclassical propagator, Eq. (5),

is the Hamilton's principal function along the classical trajectory connecting the initial and final points of the propagation. However, in a sufficiently weak external potential, the value of the Hamilton's principal function along the true (generally bent) classical trajectory is very close to that along the corresponding straight (unbent) trajectory, making the precise geometrical shape of the trajectory unsubstantial.

The approach taken in this paper is conceptually similar to the one used in Ref. [10] to analyze the spreading of quantum wave packets in the Lorentz gas. The latter consists of a particle moving in an array of fixed elastic scatterers, taken to be hard disks (spheres) in two (three) spatial dimensions. However, it is important to point out that in the Lorentz gas, unlike in the system addressed in the present paper, one must take into account deflections of classical trajectories in order to obtain the quantum-mechanical equivalent of the circular (spherical) mirror formula.

Acknowledgments

The authors thank Tobias Kramer for useful discussions. A.G. acknowledges the hospitality of the University of Regensburg during a two-month visit where much of this work was done. K.R. thanks the *Deutsche Forschungsgemeinschaft* for financial support within Research Unit FOR 760.

Appendix A: Expansion of Hamilton's principal function

The following discussion is based on the argument that was, e.g., presented in Ref. [14].

Let us consider the Lagrangian

$$\mathcal{L}_\epsilon[\mathbf{r}](\tau) = \frac{m}{2} \left(\frac{d\mathbf{r}}{d\tau}(\tau) \right)^2 - \epsilon V(\mathbf{r}(\tau)) \quad (\text{A1})$$

along a trajectory $\mathbf{r}(\tau)$. Here $\epsilon \ll 1$ serves as a dimensionless strength of the potential. The corresponding Hamilton's principal function is given by

$$S_\epsilon[\mathbf{r}](t) = \int_0^t d\tau \mathcal{L}_\epsilon[\mathbf{r}](\tau). \quad (\text{A2})$$

We now denote by $\mathbf{r}_\epsilon(\tau)$ a trajectory that satisfies the boundary conditions $\mathbf{r}_\epsilon(0) = \mathbf{q}'$ and $\mathbf{r}_\epsilon(t) = \mathbf{q}$, and makes the action $S_\epsilon[\mathbf{r}](t)$ stationary, i.e.,

$$\frac{\delta S_\epsilon}{\delta \mathbf{r}}[\mathbf{r}_\epsilon](\tau) = \mathbf{0}. \quad (\text{A3})$$

Then, for a trajectory $\mathbf{r}_0(\tau)$, that satisfies the same boundary conditions, $\mathbf{r}_0(0) = \mathbf{q}'$ and $\mathbf{r}_0(t) = \mathbf{q}$, and that is the stationary trajectory of $S_0[\mathbf{r}](t)$, we have

$$\begin{aligned} S_\epsilon[\mathbf{r}_0](t) &= S_\epsilon[\mathbf{r}_\epsilon](t) + \int_0^t d\tau \frac{\delta S_\epsilon}{\delta \mathbf{r}}[\mathbf{r}_\epsilon] \cdot (\mathbf{r}_0 - \mathbf{r}_\epsilon) \\ &+ \frac{1}{2} \int_0^t d\tau (\mathbf{r}_0 - \mathbf{r}_\epsilon) \cdot \frac{\delta^2 S_\epsilon}{\delta \mathbf{r}^2}[\mathbf{r}_\epsilon] (\mathbf{r}_0 - \mathbf{r}_\epsilon) + \dots \end{aligned} \quad (\text{A4})$$

Substituting Eq. (A3) into (A4) and taking into account $\mathbf{r}_\epsilon = \mathbf{r}_0 + \mathcal{O}(\epsilon)$ we obtain

$$S_\epsilon[\mathbf{r}_\epsilon](t) = S_\epsilon[\mathbf{r}_0](t) + \mathcal{O}(\epsilon^2). \quad (\text{A5})$$

-
- [1] L. de Broglie, *The wave nature of the electron*, Nobel Lecture (1929), available online <http://nobelprize.org>.
 - [2] M. C. Gutzwiller, *Chaos in Classical and Quantum Mechanics* (Springer-Verlag, New York, 1990).
 - [3] H.-J. Stöckmann, *Quantum Chaos: An Introduction* (Cambridge University Press, Cambridge, 1999).
 - [4] F. Haake, *Quantum Signatures of Chaos* (Springer, Berlin, 2010).
 - [5] See, e.g., D. J. Tannor, *Introduction to Quantum Mechanics: A Time-Dependent Perspective* (Palgrave Macmillan, 2007).
 - [6] J. J. Sakurai, *Modern Quantum Mechanics* (Addison-Wesley, Reading, MA, 1994), pp. 392–394.
 - [7] For related work see: G. Vandegrift, *Am. J. Phys.* **72**, 404 (2004).
 - [8] For an account of various semiclassical Gaussian wave packet approaches see, e.g., E. J. Heller, *Acc. Chem. Res.* **39**, 127 (2006).
 - [9] G. Barton, *Elements of Green's Functions and Propagation* (Clarendon Press, Oxford, 1989).
 - [10] A. Goussev and J. R. Dorfman, *Phys. Rev. E* **71**, 026225 (2005).
 - [11] H. Tal-Ezer and R. Kosloff, *J. Chem. Phys.* **81**, 3967 (1984).
 - [12] H. De Raedt, J. S. Kole, K. F. L. Michielsen, and M. T. Figge, *Comp. Phys. Comm.* **156**, 43 (2003).
 - [13] W. van Dijk, J. Brown, and K. Spyksma, *Phys. Rev. E* **84**, 056703 (2011).
 - [14] O. Bohigas, M.-J. Giannoni, A. M. O. de Almeida, and C. Schmit, *Nonlinearity* **8**, 203 (1995).