

Sports related concussion: An emerging era in digital sports technology

Dylan Powell¹, Sam Stuart², and Alan Godfrey^{1*}

¹*Department of Computer and Information Sciences, Faculty of Engineering and Environment, Northumbria University, Newcastle upon Tyne, UK, NE1 8ST*

²*Department of Sports, Exercise and Rehabilitation, Northumbria University, Newcastle upon Tyne, UK.*

*Corresponding author: alan.godfrey@northumbria.ac.uk

Abstract— Sports-Related Concussion (SRC) is defined as a mild traumatic brain injury (mTBI) leading to complex impairment(s) in neurological function with many seemingly hidden or difficult to measure impairments that can deteriorate rapidly without any prior indication. Growing numbers of SRCs in professional and amateur contact sports has prompted closer dialogue regarding player safety and welfare. Greater emphasis on awareness and education has improved SRC management, but also highlighted the difficulties of diagnosing SRC in a timely manner, particularly during matches or immediately after competition. Therefore, challenges exist in off field assessment and return to play (RTP) protocols, with current traditional (subjective) approaches largely based on infrequent snapshot assessments.

Low-cost digital technologies may provide more objective, integrated and personalized SRC assessment to better inform RTP protocols whilst also enhancing the efficiency and precision of healthcare assessment. To fully realize the potential of digital technologies in the diagnosis and management of SRC will require a significant paradigm shift in clinical practice and mindset. Here, we provide insights into SRC clinical assessment methods and the translational utility of digital approaches, with a focus on off field digital techniques to detect key SRC metrics/biomarkers. We also provide insights and recommendations to the common benefits and challenges facing digital approaches as they aim to transition from novel technologies to an efficient, valid, reliable, and integrated clinical assessment tool for SRC. Finally, we highlight future opportunities that digital approaches have in SRC assessment and management including digital twinning and the ‘digital athlete’.

***Index Terms*—Concussion, digital-health, wearables, sports medicine**

I. INTRODUCTION

Direct impact(s) to the head or neck during contact sport are major contributors to individuals sustaining Sports-Related Concussion, SRC (1). The incidence of SRC has grown in many contact sports. For example, in rugby union the incidence can be as high as one concussion per game (2,3). Accordingly, SRC present notable health risks to those participating in contact sports where the intensity of e.g., high impact collisions are commonplace with considerable challenges in diagnosis and monitoring to inform return to play/participation (RTP) (3-6).

Timely identification of SRC is of critical importance to SRC management, to avoid adverse neurological implications (4).

Appropriate SRC management ensures participants do not RTP prematurely as this can lead to a secondary brain injury (1,2,5). Second impact can have serious consequences including increased intracranial pressure and in extreme cases, death (6). Hence, diagnosing SRC through timely and accurate assessment is of crucial importance to minimize short term health risks. This is reinforced by evidence highlighting the potential long-term impacts of inappropriate SRC management on brain health and chronic traumatic encephalopathy (CTE) (7,8). Long-term neurological deficits associated with head trauma have increased public health concerns (across many sports), driving demand for evidence-based monitoring and treatment (9).

Immediate and accurate (on-field) recognition and management of SRC remains difficult. This includes professional teams/sports that often possess sufficient medical staff to monitor for suspicious mechanisms of injury which may lead to a SRC (10,11). Thus, accurate recognition of SRC is particularly challenging in environments with limited medical support such as amateur teams/sports, where there may be one coach or first aider only. In rugby union environments with reduced medical provision, the conservative approach of 'Recognize & Remove and if in doubt, sit them out' is adopted (12). That involves permanently removing players identified as being involved in possible head injury related events (e.g., contact with head or neck) or if they display signs and symptoms associated with SRC there is no return to sporting activity until a medical assessment is performed. That aims to reduce occurrences of missed or misdiagnosed SRC in low-resource/amateur environments.

SRC presentation is heterogeneous with a wide variety of signs and symptoms, some of which are subtle and easily missed or may only become apparent in the following hours and days after injury (13). Therefore, challenges remain in the subsequent (off-field) assessment and RTP protocols following SRC. This is confounded by traditional approaches used to diagnose and monitor SRC often occurring during infrequent snap-shot assessments. The most widely used approach in SRC assessment is the Sports Concussion Assessment Tool (SCAT) which tests aspects of cognition, balance and vision via a paper-based questionnaire administered by a health professional (1,14). The manual but subjective nature of tests like SCAT, means formal SRC diagnosis, rehabilitation and RTP is based solely on clinical judgement with information gathered from self-reported assessment techniques (15). This is problematic as research shows SRC is a dynamic and complex pathological process with difficult to measure impairments that can change or deteriorate rapidly without any prior indication (16). This presents challenges for the safety, rehabilitation and RTP.

The Concussion Consensus Statement (13) reinforces a need for more objective approaches through robust development and provision of diagnostic and prognostic biomarkers to better assess the presence/severity and recovery of SRC, respectively. Digital imaging technologies such as functional MRI (fmRI) or pET scanners are (reference standards) already used to assess the severity of damage such as skull fractures and bleeding on the brain in more severe traumatic injuries. However, their effectiveness and practicality when used in isolation for SRC diagnosis is yet to be proven, with only a minority of mTBI such as

SRC displaying distinguishable structural changes immediately post-concussion (17). Additionally, not all players suspected of SRC require hospital assessment and of those attending Accident and Emergency (A&E) Departments, only those presenting the most severe signs and symptoms will be sent for imaging (18–20). Thus, those reference technologies are not typically deployed for routine SRC assessment.

Recently, lower cost (digital) technologies have been developed to measure and monitor outcomes for more informed assessments (21). Such approaches could provide scalable robust data for more informed and integrated SRC diagnosis to better inform RTP, enhancing the efficiency and precision of healthcare assessment (22,23). In this narrative review, we examine SRC clinical assessment methods in four key areas (cognitive, visual, motor, symptom), providing insights into the translational utility of readily attainable digital methods. We examine common benefits and challenges facing those digital approaches as they aim to transition from novel technologies to efficient, valid, reliable, and integrated clinical tools for SRC. We highlight future opportunities that attainable digital tools can have in SRC diagnosis and monitoring with a systems science-based management approach including digital twinning and the ‘digital athlete’. We provide recommendations on how this field should develop.

II. SPORTS RELATED CONCUSSION ASSESSMENT

The rise in SRC cases presented at A&E/ED has prompted closer discussion about improved assessment and management, including calls for development of national guidelines (18). Mistry et al (20) highlight the main objective of SRC assessment in A&E is to triage the player/patient, identifying any readily obvious brain injury symptoms/signs that require e.g., surgical intervention. That approach, although it may improve efficiency, omits thorough assessment of many other subtle SRC impairments such as cognitive, motor/functional (e.g. balance, gait) and visual deficits (24). Thus, current SRC assessment are often binary snapshots, ignoring the interconnected nature and heterogeneity among individuals. Most post discharge management involves information for the player regarding red flag signs/symptoms and/or provision of head injury information leaflets. Furthermore outside of professional environments, there is often no physician assessment or follow-up until returning to full contact training (25).

As such current SRC management and rehabilitation protocols rely on self-reported measures/symptoms to determine readiness to play. Therefore, SRC recovery times and prognosis is highly variable and varies dramatically across different age groups and gender. Indeed some individuals can take significantly longer than the expected to RTP (3-4 weeks) and experience chronic symptoms even after returning to play (26,27) As such reliance on subjective non-specific measures such as symptoms make it extremely difficult to confidently know when it is safe for players to RTP. This highlights the need for valid, objective tools to aid diagnosis, monitoring and RTP in SRC (20).

A. Cognitive assessment

1) Routine clinical approaches

Comprehensive assessment of cognitive function outside of sport typically includes detailed interviews, exploring the history of a patient's health, education and social background. In contrast, SRC focusses on more specific areas of cognitive functioning only such as short-term memory, working memory and executive-level function (28). Pen-and-paper tests include the Short-Blessed Test, digit span (forward and/or reverse) and the Standardised Assessment of Concussion (SAC), now incorporated into the fifth version of the SCAT (SCAT5). Despite widespread clinical use, these tests carry considerable challenges including manual score calculation hindering automated or immediate comparison of scores across different individuals and time points (29). Fortunately, progression to using digital neurocognitive testing has overcome some of these limitations.

2) Digital approaches: Computerized programs

Introduction of digital-based cognitive assessments offers a number of advantages over pen and paper methods including objective cognitive metrics (e.g., reaction time calculation), randomization of test trials with automation of data collection and analysis (30). Immediate Post-Concussion Assessment and Cognitive Test (ImPACT) is an example of a scalable computerized neurocognitive tool that assesses verbal memory, reaction time, visual-motor speed and visual memory (31,32). ImPACT tests are complemented with the integration of demographic data and a post-concussion symptom scale for players and staff. Research shows ImPACT is sensitive post-concussion in the acute phase (within the first few days) with measurable differences in verbal memory, visual memory and slower reaction times (33,34). However there is mixed evidence for neurocognitive testing in subacute and chronic concussion (3,25,35). Indeed, the international consensus statement of concussion states that "tests should not be seen as the sole basis for the management of decisions" (4).

Despite the value of digital neurocognitive testing in acute SRC cognitive testing, challenges remain for pragmatic deployment in low-resource environments. High cost of initial software licenses or fixed yearly subscriptions can be prohibitive to amateur sports teams with limited budgets. Often these commercially orientated companies rarely permit independent validation of their technologies or algorithms used to interpret raw data or outputs. This lack of open-source or transparent approach makes it very difficult for governing bodies to make evidence-based decisions about which test or technology to endorse/promote. Other pragmatic limitations on a single approach is the reliance on baseline data, where it isn't always feasible to gather pre-injury data due to e.g., players moving between clubs/teams. Without baseline information, it is difficult to ascertain if an athlete's post-concussion neurocognitive scores are the result of concussion or individual variability. Consequently, no single cognitive test/technology has proven capable for standalone use. This has placed greater responsibility on clinicians to have prior

experience and use clinical judgement when managing SRC (13,33), which may partly explain the reluctance to adopt technology in SRC assessment.

B. Visual assessment

1) Current approaches

Normal vision correlates with healthy cerebral activity and brain function (36). SRC can cause impairments in visual and oculomotor speed, with research showing oculomotor dysfunction present in up to 90% of SRC cases (37). Traditional subjective visual assessment includes eye-tracking tests e.g., Visual Oculomotor Assessment (VOMS), which assesses impairments via self-report. This test includes a baseline measurement where players verbally rate changes in headache, dizziness and nausea symptoms compared with their immediate baseline state on a scale from 0 (none) to 10 (severe) to determine if each test provokes symptoms (38). Other visual tests include the King-Devick (K-D), which is an indirect measurement of rapid eye movements, language function and attention. The K-D test has demonstrated moderate sensitivity (60%) but poor specificity (39%) in identifying players diagnosed with concussion (35). It is also unclear how training and learning effects can influence participant scores, and to date there is an absence in clinically significant change scores/data. Indeed a recent paper outlined that current eye tracking tests (such as K-D) were no better than traditional off-field screening alternatives (35). This is confounded by deficiencies and heterogeneity in current cognitive testing protocols and environments, making comparisons between studies and decision on choice of test difficult (34,39). As such the paper advised that current tests should not be routinely incorporated in SRC assessment.

In addition to suboptimal sensitivity, current tests rely heavily on baseline data collection which are not feasible to implement in low-resource environments, where there is often insufficient staff/funding to perform baseline screening. Hence there is significant demand for more sensitive, objective and scalable solutions for visual assessment in the form of wearable digital eye trackers and/or mobile technologies.

2) Wearable digital eye-trackers

Non-invasive digital technologies such as eye trackers can objectively monitor eye movements during laboratory tasks, assessing visual and cognitive processing (36,40) in a variety of research paradigms ranging from neuroscience to social science (41). Despite this rapid rise in availability of technologies, there are several barriers to clinical deployment. Stuart et al (42) outlined current state of the art and challenges in mTBI visual assessment, finding most studies do not adequately address or report validity or reliability of eye-trackers, making comparison or clinical interpretation difficult. To translate these technologies into clinical application there is a need for more routine validation, standardization in testing paradigms and transparency on their

use, including algorithms and data analysis methods. (43,44)

For the few studies with adequately reported information, Khalife et al highlight the benefits of investigating rapid, reliable eye movement impairment in SRC assessment with the Tobii eye-tracker (45). The latter shines a light onto the eye causing a reflection, a high-resolution camera then captures an image of the eye with reflections which is then used to calculate gaze direction. Research has found the accuracy of the Tobii EyeX to offer sufficient accuracy and precision in gaze direction (46). This is consistent with research testing other technologies such as the Eye-Sync which offer good-excellent levels of sensitivity (88%) and specificity (87%) in smooth pursuit assessment (47,48). Overall digital technologies offer high-resolution quantitative data and value over traditional approaches such as the VOMS. Despite promising results of accuracy in academic research, there has yet to be clinical research investigating thresholds or measures that can be applied into a meaningful change that can be widely used for SRC assessment.

C. Motor assessment

1) Balance and gait under direct observation

Balance and gait/walking impairments are associated with neurological conditions, including concussion and therefore forms a key component of clinical assessment (1,49–51). The Balance Error Scoring System (BESS) test is a balance and postural stability assessment that is widely used for examining impairments by asking participants to specific adopt stances aimed to challenge their motor and vestibular system (52–54). However, the BESS is assessed subjectively, through manually recording errors (e.g., if the participant removes a hand from their waist during a single leg stance) and timed using a stopwatch. As a consequence the BESS sensitivity is greatly influenced by assessor experience and research suggests only sensitive in the acute phase (within first 2 days of injury) (55). These inherent limitations of subjective assessment make it difficult to apply in sporting environments, where there is demand for precise and sensitive clinical measurements. As outlined by Johnson et al, traditional balance assessments ‘are subjective in nature, do not adequately challenge high functioning athletes and may not be capable of detecting subtle balance disturbances following a concussive event’ (56). This raises questions surrounding the accuracy in diagnosis, RTP protocol and crucially, paradigms by which SRC is assessed. Indeed gait and postural deficits may in fact be impaired for long periods beyond, typical timeframes of recovery (57,58). Therefore, traditional assessment of motor function carries significant limitations yet remain extremely prevalent across clinical practice. Opportunities for improvement may be afforded by adopting digital approaches such as inertial sensor-based wearables discussed in the next section.

2) Inertial sensor-based wearables

The development of wearables equipped with inertial sensors (accelerometers and gyroscopes) has facilitated pragmatic

instrumented testing of traditional approaches such as the Timed-Up-and-Go (iTUG) and BESS (50,59,60). These studies do show attempts to instrument traditional tests and provide objective digital SRC biomarkers from a single wearable sensor. Recently, Celik et al (61) adopted a multi-wearable approach towards a comprehensive instrumentation of SCAT5. By using eight inertial wearables (wrists, legs, lower back) to segment specific components (e.g., tandem walk and static balance) a wealth of spatial and temporal data associated with each SCAT5 component with excellent/millisecond resolution. Moreover, the study showed how wearables can automatically and more accurately calculate, recognize balance and gait errors during tasks compared to clinical observation, also highlighted by Johnston et al (58,62). Beyond instrumentation of traditional assessment, research with inertial wearables show SRC and mTBI impacts balance, gait and turning (55,63–66), including under longitudinal assessment (55).

Despite laboratory research showing motor impairments can be strongly associated with SRC, it is not yet known exactly what clinical gait or turning assessment techniques are sensitive for SRC. Therefore, barriers remain in clinical validation and how to translate some novel inertial measures (e.g., frequency-based data) into clinical endpoints or biomarkers. Indeed, the episodic nature of current laboratory assessments may be supplemented beyond the clinic/hospital during real world/free-living remote assessment (67,68). However a necessary precursor to longitudinal free-living remote balance and gait assessment is verified and validated digital SRC biomarkers enabling trust and better understanding by clinicians and patients (43).

D. Symptom assessment

1) Current approaches

Despite rapid and extensive development in the availability of different tests to assess SRC, the symptom checklist and severity indices are retained as the cornerstone for most decisions around readiness to return to play. This includes the Post-Concussion Symptom Scale (PCSS), which assesses a variety of symptoms (0-6 of increasing severity) to give an overall score and has been adapted and abridged into 5th edition of the SCAT (SCAT5) (54,69).

Although common due to their ease of use, studies have examined the sensitivity of symptom scales in SRC and found suboptimal sensitivity and specificity (54,55,69). Moreover, the severity of symptoms/signs reported by players following a SRC varies significantly (immediate or delayed onset) which can hinder confidence for clinicians and players/patients when assessing readiness to return to play (54,70). Additionally, some studies report that players can manipulate self-reported baseline symptom scores, allowing them to mitigate any poorer performance of scores post-concussion (71). For example, only 17% of athletes self-reported symptoms of SRC, although nearly half of this cohort (48%) sustained a head injury and associated signs of SRC (71). Relying on self-reported data may be particularly challenging in competitive environments where there is societal or financial gain in staying injury free.

Alongside the challenges of subjectivity in self-reported symptomology there are significant practical and logistical barriers. Current pen-and-paper based SRC assessment methods can take 10-15 minutes/player which isn't always achievable in environments with only one medical practitioner to complete player assessment (e.g., at an amateur level) (72). Therefore, challenges remain in providing approaches to more efficiently document SRC injury characteristics across both low- and high-resource environments. The growth in usage and availability of smartphones and affiliated commercial digital technologies means players and clinicians already have widespread access and familiarity of use. A move towards mobile digital applications may serve to overcome some limitations of symptom assessment, data storage and analytics compared to self-reported pen and paper methods.

2) *Digitally recorded symptoms*

Several smartphone/mobile digital applications/apps are available to track injuries and monitor SRC recovery through symptom reporting. Apps include CSX (used by e.g. World Rugby) and the Cleveland Clinic Concussion Application (C3) which records data on reaction time, memory, vision and information processing (73). To the authors knowledge, CSX has yet to be fully deployed into amateur sports. However, C3 has been used to collect some concussion data in college and professional rugby (72). Linder et al found that use of an Electronic Injury Reporting (IR) app provides a useful digital platform for injury related demographic analysis (72). App advantages include the capacity for players to complete (in their own time) symptom recording as frequently as required with more regularity and consistency in the absence of clinicians.

Current reliance on traditional non-digital approaches such as the SCAT5 and lack of robust databases means the progression and recovery of SRC symptoms is unclear (1,35). Moving towards digital symptom recording may allow greater understanding and co-investigation with other SRC impairments.

III. TOWARDS DAILY USE OF DIGITAL APPROACHES

Digital approaches and technologies could provide objective information, generating useful and reliable data for improved data presentation, analysis, and insights for SRC management. From this narrative review, Figure 1 presents a hypothetical scenario contrasting traditional (1A) to digital (1B) approaches for cognitive, motor and visual assessment. Figure 1A alludes to current limitations e.g., different clinicians performing assessments in highly controlled and supervised environments. Figure 1B demonstrates how digital-based assessments could facilitate integration from multimodal sources (technologies, inc. wearables). This multimodal digital approach could capture e.g., behavioral trends continuously and remotely in habitual environments without the need for a clinician to be present. Figure 1C. By adopting complimentary digital approaches, more objective

comparisons or insights could be made across a range of SRC impairments (cognitive, visual, symptom and motor).

<Figure 1>

IV. DISCUSSION

Implementing digital approaches in sports medicine and SRC care could transform how player data is captured, analyzed and communicated. Current SRC approaches are restricted by the reliance of subjective self-reported assessment under direct observation of a clinician. Thus, outcomes are often reliant on a player informing the clinician and the clinician's clinical judgement or interpretation. Objective approaches in SRC are often confined to bespoke or professional environments, limiting deployment and accessibility to amateur or adolescent players. Additionally, there is considerable focus on traditional in person assessment at episodic 'snapshot' assessments with little to no remote/habitual data collected on those who sustain a SRC during contact sports. The addition of digital or remote assessment approaches such as wearables may augment, and supplement data gathered in traditional assessment visits under supervision of healthcare professionals.

Presently, digital cognitive testing only offers a snapshot assessment. Yet, testing could be better utilized through constant remote evaluation via apps. This would mitigate the need for clinicians to be present and would allow higher frequency of testing within the players routine environment (74). Although testing in the latter would be conducted in less controlled conditions, there is considerable value in conducting testing in remote, real-world/free-living as they would be within habitual conditions (21,75,76).

Use of current eye tracking approaches in SRC is not currently supported. However, there are opportunities for use of digital eye-tracking outside of the clinic or in static situations. As these methods do not require active participation of the wearer, they overcome many potential issues of adherence allowing participants to wear these technologies as part of their daily life (21). However, capturing reliable data on impaired eye movement outside of controlled/laboratory conditions generates many complications. Thus, challenges remain in the refinement and optimization of eye-tracking as a future SRC diagnostic tool. These include minimum and maximum testing times, choice of eye tracking tests, lack of standardized protocols to detect SRC eye movement impairments as well as complexity of analyzing big data. Overcoming these challenges will require development and refinement of protocols and data processing methods/algorithms.

Use of (inertial-based) wearables within mTBI has shown considerable promise for measuring balance and gait impairments (53,63,77–79). Yet the true utility of inertial technologies may be their use beyond the clinic with provision of habitual balance

and gait data (67). Such wearables should become more accepted and the standard for gathering continuous, high-resolution free-living data due to their discrete attachment and low wearer burden. Technical validation of inertial wearables has led to the development of a conceptual gait model (80), providing a framework for clinicians to better utilize gait data to make more informed clinical decisions. For example, a similar modelling approach (78) has been applied in chronic (non-sporting) mTBI providing enhanced gait analysis, which could be a means to assess response to interventions and better understand underlying impairments. Future research should apply and evaluate conceptual models in acute mTBI and SRC from free-living gait data to provide better insight to habitual player recovery, better informing RTP.

Symptoms post SRC are thought to be closely linked to improvements in physiological recovery and should therefore remain a cornerstone of assessment (81,82). However, digital monitoring may not easily lend itself within free-living due to requirement for players attention. Yet by collecting longitudinal (habitual) symptom data, a deeper understanding of the rate of progression of symptoms could be determined, supporting the transition and deployment of other digital approaches. Clinicians could deploy apps to measure symptoms beyond snapshot testing points but would need to account for testing conditions. Adoption of mobile technologies to support symptom documentation would allow integration with other digital approaches, providing holistic systems-based approaches to SRC management. If used routinely, such approaches may have capacity to provide alert systems to healthcare professionals for missed SRC or injuries within squads, which could standardize and systematize injury severity through evaluation of red flags via structured and personalised assessment.

A. Towards the digital athlete

Measuring and monitoring a single impairment is unlikely to reveal meaningful new insights into SRC. There is a need for a multidimensional/multimodal approach with digital diagnostic and prognostic models/frameworks to improve outcomes (83). Therefore, step changes to understand, diagnose and manage SRC will require multi-scalar approaches which could be built around a systems-science framework to shift research into practice. Achieving this will require cross-disciplinary collaborations and the adoption of novel approaches with shared repositories to facilitate and intensify collaboration.

One emerging concept is digital twinning, a strategic technology made feasible through developments in the Internet of Things (IoT) and big data. It has been applied to complex systems and in medicine to provide a framework to create a virtual representation of players based on the integration of data from digital devices, omics, imaging and electronic medical records (84). A digital twin can represent a back-up/copy to a person's physical state before an intervention, providing retrospective or real-time monitoring of a wide range of parameters (85). The application of wearables to create a digital twin of baseline health information for a player participating in contact sport would provide objective data, providing opportunities for remote monitoring and evaluation (86). This leads to the concept of the digital athlete (Figure 2) where an open framework is proposed

for the emerging areas of digital health (86). The ubiquitous nature of IoT/digital technologies coupled with digital twinning offers the potential for a paradigm change to better understand mTBI and more effective detection, prediction, and assessment of SRC. However, digital twinning is not just about collecting data, it is also about creating the computing architecture allowing new insights to support decision making, synthesizing information, facilitating communication and the development of shared hypotheses (87). Incremental changes in the ability to gather data to generate biomarkers related to health would enable the creation of player centric protocols and targeted treatments. Central to this development has been the recognition that wearables are now part of IoT systems, incorporating sensing with data analytics to create an integrated approach, providing insights into physiological status, health and performance (85,88). Built on the concept of digital twinning, the digital athlete would enable better integration of data, simulation of scenarios and predict outcomes more accurately for SRC assessment and monitoring.

<Figure 2>

B. Future considerations: Important next steps and recommendations

Digital approaches could have tangible objective improvements in SRC diagnosis and monitoring. However, there are notable application and deployment challenges pertaining to sports (individual versus team), funding, environments (professional and amateur) and education. This will demand different approaches to ensure correct adherence and implementation as well as robust data collection protocols to ensure adequate monitoring. Likewise, there are privacy (security), ethical (remote and/or continuous monitoring) and trust considerations (effectiveness of digital technologies to augment traditional approaches) when collecting SRC data. To better understand these demands, there is a need for independent and multidisciplinary research with diverse stakeholders (e.g., athlete/patient, clinician, technologist and sport's governing bodies) with transparency in findings and conclusions drawn. To support behavior change for routine digital adoption in SRC, there must be development of a multidisciplinary standardized frameworks and agreement in validated/reliable tools to ensure trustworthy technologies that are fit-for-purpose. Accordingly, high level recommendations include:

- Routine engagement with sport specific stakeholders on how digital tools could advance SRC diagnosis and monitoring,
- Development of open-source athlete digital monitoring approaches for routine integration of data streams,
- An expert, multidisciplinary consensus on use of fit-for-purpose digital SRC tools within and/or across sports
- Transparency of all digital tools in SRC assessment (i.e., no black-box development)

V. CONCLUSIONS

Increasing incidence of SRC and challenges of current diagnosis approaches has illuminated the scale of the problem facing clinicians for routine diagnosis and monitoring. Although traditional and subjective approaches will remain a crucial component of SRC assessment, they are unable to reliably provide an evidence-based approach to the detection, monitoring and management to inform RTP. Digital approaches have the potential to transform the way player/participant data can be objectively captured, processed, and analyzed, enhancing current healthcare practice in SRC. Informative digital biomarkers from habitual behaviors could be routinely captured providing reliable (big) data that can support development of other novel SRC biomarkers. Adopting free-living assessment is feasible with some current wearables but future considerations should be given to integration with IoT platforms for a multi-model, remote and holistic player assessment. Digital-based approaches coupled with novel concepts/frameworks from other research domains (e.g., digital twinning) provide a persuasive and timely route to addressing ongoing limitations in SRC. Recommendations provided here could help modernize (digitize) SRC diagnosis and monitoring to protect athletes and their sport.

ACKNOWLEDGEMENTS

This work was supported in part by the Private Physiotherapy Education Foundation under Grant RPJ03732. D. Powell holds a PhD scholarship from the Faculty of Engineering and Environment, Northumbria University.

COMPETING INTERESTS

Author Alan Godfrey is Deputy Editor of npj Digital Medicine. All other authors declare that there are no competing interests.

AUTHOR CONTRIBUTIONS

DP, SS and AG gathered literature sources. DP wrote the initial manuscript with critical input from SS and AG. DP, SS and AG all contributed to writing. DP, SS and AG approved the final version of the manuscript.

REFERENCES

1. McCrory P, Meeuwisse W, Dvorak J, Aubry M, Bailes J, Broglio S, et al. Consensus statement on concussion in sport—the 5th international conference on concussion in sport held in Berlin, October 2016. *Br J Sport Med* [Internet]. 2017;12(1):6–11. Available from: <http://bjsm.bmj.com/lookup/doi/10.1136/bjsports-2017-097699>
2. Daneshvar DH, Nowinski CJ, McKee AC, Cantu RC. The epidemiology of sport-related concussion. *Clin Sports Med* [Internet]. 2011 Jan [cited 2018 May 21];30(1):1–17, vii. Available from: <http://www.ncbi.nlm.nih.gov/pubmed/21074078>
3. Rafferty J, Ranson C, Oatley G, Mostafa M, Mathema P, Crick T, et al. On average, a professional rugby union player is more likely than not to sustain a concussion after 25 matches. *Br J Sports Med* [Internet]. 2018 Mar 12 [cited 2018 Apr 11];53(15):bjsports-2017-098417. Available from: <http://www.ncbi.nlm.nih.gov/pubmed/29530941>
4. McCrory P, Meeuwisse W, Johnston K, Dvorak J, Aubry M, Molloy M, et al. Consensus statement on concussion in sport: The 3rd International Conference on Concussion in Sport held in Zurich, November 2008. In: *Journal of Athletic Training*. National Athletic Trainers' Association Inc.; 2009. p. 434–48.

5. Marshall SW, Spencer RJ. Concussion in Rugby: The Hidden Epidemic. *J Athl Train* [Internet]. 2001 Sep [cited 2018 Apr 11];36(3):334–8. Available from: <http://www.ncbi.nlm.nih.gov/pubmed/12937506>
6. Tator C, Starkes J, Dolansky G, Quet J, Michaud J, Vassilyadi M. Fatal Second Impact Syndrome in Rowan Stringer, A 17-Year-Old Rugby Player. *Can J Neurol Sci* [Internet]. 2019 May 1 [cited 2020 Jun 24];46(3):351–4. Available from: <https://pubmed.ncbi.nlm.nih.gov/30945632/>
7. Baugh CM, Stamm JM, Riley DO, Gavett BE, Shenton ME, Lin A, et al. Chronic traumatic encephalopathy: neurodegeneration following repetitive concussive and subconcussive brain trauma. *Brain Imaging Behav* [Internet]. 2012 Jun 3 [cited 2017 Aug 3];6(2):244–54. Available from: <http://www.ncbi.nlm.nih.gov/pubmed/22552850>
8. Mez J, Daneshvar DH, Kiernan PT, Abdolmohammadi B, Alvarez VE, Huber BR, et al. Clinicopathological Evaluation of Chronic Traumatic Encephalopathy in Players of American Football. *JAMA* [Internet]. 2017 Jul 25 [cited 2017 Aug 3];318(4):360–70. Available from: <http://www.ncbi.nlm.nih.gov/pubmed/28742910>
9. The Times. Brain damage risk for children after three rugby games | The Times. [cited 2020 Jun 24]; Available from: <https://www.thetimes.co.uk/article/brain-damage-risk-for-children-after-three-rugby-games-3qqn20mkh>
10. Fuller GW, Kemp SPT, Raftery M. The accuracy and reproducibility of video assessment in the pitch-side management of concussion in elite rugby. *J Sci Med Sport*. 2017 Mar 1;20(3):246–9.
11. Fuller CW, Fuller GW, Kemp SPT, Raftery M. Evaluation of World Rugby’s concussion management process: Results from Rugby World Cup 2015. *Br J Sports Med* [Internet]. 2017 Jan 1 [cited 2020 Sep 7];51(1):64–9. Available from: <http://bjsm.bmj.com/>
12. Hodgson L, Patricios J. Clarifying concussion in youth rugby: Recognise and remove [Internet]. Vol. 49, *British Journal of Sports Medicine*. BMJ Publishing Group; 2015 [cited 2020 Jul 29]. p. 966–7. Available from: <https://bjsm.bmj.com/content/49/15/966>
13. McCrory P, Meeuwisse WH, Aubry M, Cantu RC, Dvořák J, Echemendia RJ, et al. Consensus statement on concussion in sport: the 4th International Conference on Concussion in Sport, Zurich, November 2012. *J Athl Train* [Internet]. 2013 [cited 2017 May 1];48(4):554–75. Available from: <http://www.ncbi.nlm.nih.gov/pubmed/23855364>
14. World Rugby. World Rugby Player Welfare - Putting Players First [Internet]. 2018 [cited 2018 May 21]. Available from: <http://playerwelfare.worldrugby.org/concussion>
15. Alla S, Sullivan SJ, Hale L, McCrory P. Self-report scales/checklists for the measurement of concussion symptoms: A systematic review. In: *British Journal of Sports Medicine*. British Association of Sport and Exercise Medicine; 2009. p. i3–12.
16. McCrea M, Meier T, Huber D, Pfito A, Bigler E, Debert CT, et al. Role of advanced neuroimaging, fluid biomarkers and genetic testing in the assessment of sport-related concussion: A systematic review. Vol. 51, *British Journal of Sports Medicine*. BMJ Publishing Group; 2017. p. 919–29.
17. Pfito A, Chen JK, Johnston KM. Contributions of functional Magnetic Resonance Imaging (fMRI) to sport concussion evaluation. *NeuroRehabilitation*. 2007 Jan 1;22(3):217–27.
18. NICE. Overview | Head injury: assessment and early management | Guidance | NICE. NICE guidance. NICE; 2019.
19. Pozzato I, Meares S, Kifley A, Craig A, Gillett M, Vu K Van, et al. Challenges in the acute identification of mild traumatic brain injuries: Results from an emergency department surveillance study. *BMJ Open* [Internet]. 2020 Feb 3 [cited 2020 Sep 7];10(2):34494. Available from: <http://bmjopen.bmj.com/>
20. Mistry DA, Rainer TH. Concussion assessment in the emergency department: a preliminary study for a quality improvement project. *Exerc Med* [Internet]. 2018 [cited 2019 Dec 3];4:445. Available from: <http://dx.doi.org/10.1136/bmjsem-2018-000445>
21. Godfrey A, Hetherington V, Shum H, Bonato P, Lovell NH, Stuart S. From A to Z: Wearable technology explained [Internet]. Maturitas Elsevier Ireland Ltd; Jul 1, 2018 p. 40–7. Available from: <http://www.ncbi.nlm.nih.gov/pubmed/29903647>
22. Seshadri DR, Li RT, Voos JE, Rowbottom JR, Alfes CM, Zorman CA, et al. Wearable sensors for monitoring the internal and external workload of the athlete. *npj Digit Med*. 2019 Dec;2(1).
23. Bhavnani SP, Narula J, Sengupta PP. Mobile technology and the digitization of healthcare. *Eur Heart J* [Internet]. 2016 [cited 2020 May 26];37:1428–38. Available from: <http://www.accessdata.fda.gov/>
24. Stiell IG, Wells GA, Vandemheen K, Clement C, Lesiuk H, Laupacis A, et al. The Canadian CT Head Rule for patients with minor head injury. *Lancet*. 2001 May 5;357(9266):1391–6.
25. Phillips T, Guy K, Martin R, Tomkinson A, Phillips D, Sloane N. Concussion in the emergency department; unconsciously incompetent? *Br J Sports Med*. 2017 Jun 1;51(11):A49.1–A49.
26. McCrory P, Meeuwisse WH, Kutcher JS, Jordan BD, Gardner A. What is the evidence for chronic concussion-related changes in retired athletes: behavioural, pathological and clinical outcomes? *Br J Sport Med* [Internet]. 2013 [cited 2017 Aug 3];47:327–30. Available from: <http://dx.doi.org/10.1136/bjsem-2013-008000>
27. Martini DN, Broglio SP. Long-term effects of sport concussion on cognitive and motor performance: A review. *Int J Psychophysiol* [Internet]. 2018 Oct 1 [cited 2020 Nov 20];132(Pt A):25–30. Available from: <https://pubmed.ncbi.nlm.nih.gov/29017781/>
28. Coppel DB. Use of Neuropsychological Evaluations. Vol. 22, *Physical Medicine and Rehabilitation Clinics of North America*. 2011. p. 653–64.
29. Snowdon A, Hussein A, Kent R, Pino L, Hachinski V. Comparison of an electronic and paper-based montreal cognitive assessment tool. *Alzheimer Dis Assoc Disord*. 2015;29(4):325–9.
30. Covassin T, Elbin RJ, Stiller-Ostrowski JL, Kontos AP. Immediate post-concussion assessment and cognitive testing (ImPACT) practices of sports medicine professionals. *J Athl Train*. 2009 Nov;44(6):639–44.
31. Dessy AM, Yuk FJ, Maniya AY, Gometz A, Rasouli JJ, Lovell MR, et al. Review of Assessment Scales for Diagnosing and Monitoring Sports-related Concussion. *Cureus*. 2017 Dec 7;9(12).
32. Iverson GL, Lovell MR, Collins MW. Interpreting Change on ImPACT Following Sport Concussion. *Clin Neuropsychol* [Internet]. 2003 Nov [cited 2020 Mar 4];17(4):460–7. Available from: <http://www.ncbi.nlm.nih.gov/pubmed/15168911>
33. Van Kampen DA, Lovell MR, Pardini JE, Collins MW, Fu FH. The “value added” of neurocognitive testing after sports-related concussion. *Am J Sports Med* [Internet]. 2006 Oct 30 [cited 2020 Sep 23];34(10):1630–5. Available from: <http://journals.sagepub.com/doi/10.1177/0363546506288677>
34. Broglio SP, Katz BP, Zhao S, McCrea M, McAllister T, Reed Hoy A, et al. Test-Retest Reliability and Interpretation of Common Concussion Assessment Tools: Findings from the NCAA-DoD CARE Consortium. *Sport Med* [Internet]. 2018 May [cited 2020 Aug 11];48(5):1255–68. Available from: <https://doi.org/10.1007/s40279-017-0813-0>
35. Fuller GW, Cross MJ, Stokes KA, Kemp SPT. King-Devick concussion test performs poorly as a screening tool in elite rugby union players: a prospective cohort study of two screening tests versus a clinical reference standard. *Br J Sports Med* [Internet]. 2018 Mar 21 [cited 2019 Jan 5];53(24):bjsports-2017-098560. Available from: <http://www.ncbi.nlm.nih.gov/pubmed/29563095>
36. Stuart S, Hunt D, Nell J, Godfrey A, Hausdorff JM, Rochester L, et al. Do you see what I see? Mobile eye-tracker contextual analysis and inter-rater reliability. *Med Biol Eng Comput* [Internet]. 2018 Feb 15 [cited 2019 Jan 5];56(2):289–96. Available from: <http://link.springer.com/10.1007/s11517-017-1669-z>
37. Samadani U, Ritlop R, Reyes M, Nehrbass E, Li M, Lamm E, et al. Eye tracking detects disconjugate eye movements associated with structural traumatic brain injury and concussion. *J Neurotrauma*. 2015 Apr 15;32(8):548–56.
38. Mucha A, Collins MW, Elbin RJ, Furman JM, Troutman-Enseki C, Dewolf RM, et al. A brief vestibular/ocular motor screening (VOMS) assessment to evaluate concussions: Preliminary findings. *Am J Sports Med* [Internet]. 2014 Oct 11 [cited 2020 Aug 4];42(10):2479–86. Available from: <http://pmc/articles/PMC4209316/?report=abstract>
39. Schatz P, Moser RS, Solomon GS, Ott SD, Karpf R. Prevalence of invalid computerized baseline neurocognitive test results in high school and

- collegiate athletes. *J Athl Train* [Internet]. 2012 May [cited 2020 Aug 11];47(3):289–96. Available from: /pmc/articles/PMC3392159/?report=abstract
40. Akhand O, Balcer LJ, Galetta SL. Assessment of vision in concussion. Vol. 32, *Current Opinion in Neurology*. Lippincott Williams and Wilkins; 2019. p. 68–74.
41. Gibaldi A, Vanegas M, Bex PJ, Maiello G. Evaluation of the Tobii EyeX Eye tracking controller and Matlab toolkit for research. *Behav Res Methods* [Internet]. 2017 Jun 1 [cited 2020 Aug 4];49(3):923–46. Available from: <http://www.tobii.com/en/eye-tracking-research/global/>
42. Stuart S, Parrington L, Martini D, Peterka R, Chesnutt J, King L. The Measurement of Eye Movements in Mild Traumatic Brain Injury: A Structured Review of an Emerging Area. *Front Sport Act Living* [Internet]. 2020 Jan 28 [cited 2020 Sep 17];2(5):5. Available from: www.frontiersin.org
43. Goldsack JC, Coravos A, Bakker JP, Bent B, Dowling A V., Fitzer-Attas C, et al. Verification, analytical validation, and clinical validation (V3): the foundation of determining fit-for-purpose for Biometric Monitoring Technologies (BioMeTs). *npj Digit Med* [Internet]. 2020 Dec 1 [cited 2020 Sep 9];3(1):1–15. Available from: <https://doi.org/10.1038/s41746-020-0260-4>
44. Godfrey A, Vandendriessche B, Bakker JP, Fitzer-Attas C, Gujar N, Hobbs M, et al. Fit-for-Purpose Biometric Monitoring Technologies: Leveraging the Laboratory Biomarker Experience. *Clin Transl Sci* [Internet]. 2020 Aug 25 [cited 2020 Sep 18];cts.12865. Available from: <https://onlinelibrary.wiley.com/doi/abs/10.1111/cts.12865>
45. Khalife H, Okdeh MA, Hage-Diab A, Haj-Ali A, Hussein B. Concussion detection using a commercially available eye tracker. In: *International Conference on Advances in Biomedical Engineering, ICABME*. Institute of Electrical and Electronics Engineers Inc.; 2017.
46. Funke G, Greenlee E, Carter M, Dukes A, Brown R, Menke L. Which Eye Tracker Is Right for Your Research? Performance Evaluation of Several Cost Variant Eye Trackers. *Proc Hum Factors Ergon Soc Annu Meet* [Internet]. 2016 Sep 8 [cited 2020 Aug 4];60(1):1240–4. Available from: <http://journals.sagepub.com/doi/10.1177/1541931213601289>
47. Sundaram V, Ding VY, Desai M, Lumba-Brown A, Little J. Reliable sideline ocular-motor assessment following exercise in healthy student athletes. *J Sci Med Sport*. 2019 Dec 1;22(12):1287–91.
48. Samadani U, Li M, Qian M, Laska E, Ritlop R, Kolecki R, et al. Sensitivity and specificity of an eye movement tracking-based biomarker for concussion. *Concussion*. 2016 Mar;1(1).
49. Alberts JL, Hirsch JR, Koop MM, Schindler DD, Kana DE, Linder SM, et al. Using accelerometer and gyroscopic measures to quantify postural stability. *J Athl Train*. 2015 Jun 1;50(6):578–88.
50. Godfrey A, Lara J, Del Din S, Hickey A, Munro CA, Wiuff C, et al. iCap: Instrumented assessment of physical capability. *Maturitas* [Internet]. 2015 Sep 1 [cited 2019 Dec 17];82(1):116–22. Available from: <https://pubmed.ncbi.nlm.nih.gov/25912425/>
51. Stuart S, Hickey A, Morris R, O'Donovan K, Godfrey A. Concussion in contact sport: A challenging area to tackle. *J Sport Heal Sci* [Internet]. 2017 Sep [cited 2018 Dec 23];6(3):299–301. Available from: <http://www.ncbi.nlm.nih.gov/pubmed/30356612>
52. Bell DR, Guskiewicz KM, Clark MA, Padua DA. Systematic review of the balance error scoring system. Vol. 3, *Sports Health*. SAGE Publications; 2011. p. 287–95.
53. King LA, Mancini M, Fino PC, Chesnutt J, Swanson CW, Markwardt S, et al. Sensor-Based Balance Measures Outperform Modified Balance Error Scoring System in Identifying Acute Concussion. *Ann Biomed Eng*. 2017 Sep 1;45(9):2135–45.
54. Downey RI, Hutchison MG, Comper P. Determining sensitivity and specificity of the Sport Concussion Assessment Tool 3 (SCAT3) components in university athletes. *Brain Inj* [Internet]. 2018 Sep 19 [cited 2020 Apr 14];32(11):1345–52. Available from: <http://www.ncbi.nlm.nih.gov/pubmed/29902070>
55. Parrington L, Fino PC, Swanson CW, Murchison CF, Chesnutt J, King LA. Longitudinal assessment of balance and gait after concussion and return to play in collegiate athletes. *J Athl Train* [Internet]. 2019 Apr 1 [cited 2019 Nov 5];54(4):429–38. Available from: <https://www.ncbi.nlm.nih.gov/pubmed/30933608>
56. Johnston W, Coughlan GF, Caulfield B. Challenging concussed athletes: the future of balance assessment in concussion. *QJM* [Internet]. 2017 [cited 2020 Apr 1];110(12):779–83. Available from: <http://www.ncbi.nlm.nih.gov/pubmed/28040709>
57. Martini D, Sabin M, Depesa S, Leal E, Negrete T, Sosnoff J, et al. The chronic effects of concussion on gait. *Br J Sports Med*. 2011 Apr 1;45(4):361–2.
58. Johnston W, Heiderscheid B, Sanfilippo J, Brooks MA, Caulfield B. Athletes with a concussion history in the last two years have impairments in dynamic balance performance. *Scand J Med Sci Sports* [Internet]. 2020 Aug 11 [cited 2021 Jan 14];30(8):1497–505. Available from: <https://onlinelibrary.wiley.com/doi/abs/10.1111/sms.13691>
59. Salarian A, Horak FB, Zampieri C, Carlson-Kuhta P, Nutt JG, Aminian K. ITUG, a sensitive and reliable measure of mobility. *IEEE Trans Neural Syst Rehabil Eng* [Internet]. 2010 Jun [cited 2020 Aug 5];18(3):303–10. Available from: /pmc/articles/PMC2922011/?report=abstract
60. King LA, Horak FB, Mancini M, Pierce D, Priest KC, Chesnutt J, et al. Instrumenting the balance error scoring system for use with patients reporting persistent balance problems after mild traumatic brain injury. *Arch Phys Med Rehabil* [Internet]. 2014 Feb 1 [cited 2020 Sep 19];95(2):353–9. Available from: <http://dx.doi.org/10.1016/j.apmr.2013.10.015>
61. Celik Y, Powell D, Woo WL, Stuart S, Godfrey A. A feasibility study towards instrumentation of the Sport Concussion Assessment Tool (iSCAT). In: *Proceedings of the Annual International Conference of the IEEE Engineering in Medicine and Biology Society, EMBS*. Institute of Electrical and Electronics Engineers Inc.; 2020. p. 4624–7.
62. Johnston W, Heiderscheid B, Coughlan GF, McLoughlin R, Liston M, Brooks A, et al. Concussion recovery evaluation using the inertial sensor instrumented Y Balance Test. *J Neurotrauma* [Internet]. 2020 May 12 [cited 2020 Nov 25]; Available from: <https://pubmed.ncbi.nlm.nih.gov/32394801/>
63. Fino PC, Parrington L, Pitt W, Martini DN, Chesnutt JC, Chou LS, et al. Detecting gait abnormalities after concussion or mild traumatic brain injury: A systematic review of single-task, dual-task, and complex gait. Vol. 62, *Gait and Posture*. Elsevier B.V.; 2018. p. 157–66.
64. Chesnutt J, King L, Parrington L, Fino P, Stuart S. Turning the Tide: Real-World Turns are More Sensitive to mTBI Deficits Than Daily Activity Measures. *Arch Phys Med Rehabil* [Internet]. 2018 Nov 1 [cited 2020 Sep 19];99(11):e181. Available from: <http://www.archives-pmr.org/article/S0003999318311031/fulltext>
65. Stuart S, Parrington L, Martini D, Popa B, Fino PC, King LA. Validation of a velocity-based algorithm to quantify saccades during walking and turning in mild traumatic brain injury and healthy controls. *Physiol Meas* [Internet]. 2019 Apr 26 [cited 2020 Sep 19];40(4):044006. Available from: <https://iopscience.iop.org/article/10.1088/1361-6579/ab159d>
66. Fino PC, Parrington L, Walls M, Sippel E, Hullar TE, Chesnutt JC, et al. Abnormal Turning and Its Association with Self-Reported Symptoms in Chronic Mild Traumatic Brain Injury. *J Neurotrauma* [Internet]. 2018 May 15 [cited 2020 Sep 19];35(10):1167–77. Available from: <https://pubmed.ncbi.nlm.nih.gov/29078732/>
67. Del Din S, Godfrey A, Galna B, Lord S, Rochester L. Free-living gait characteristics in ageing and Parkinson's disease: Impact of environment and ambulatory bout length. *J Neuroeng Rehabil* [Internet]. 2016 May 12 [cited 2020 Sep 9];13(1):1–12. Available from: <https://link.springer.com/articles/10.1186/s12984-016-0154-5>
68. Stuart S, Parrington L, Martini DN, Kreter N, Chesnutt JC, Fino PC, et al. Analysis of Free-Living Mobility in People with Mild Traumatic Brain Injury and Healthy Controls: Quality over Quantity. *J Neurotrauma* [Internet]. 2020 Jan 1 [cited 2020 Nov 20];37(1):139–45. Available from: <https://www.liebertpub.com/doi/10.1089/neu.2019.6450>
69. Graham R, Rivara F, Arbogast K, Brent D, Casey B, Covassin T, et al. Concussion Recognition, Diagnosis, and Acute Management. In: *Sports-Related Concussions in Youth* [Internet]. 2013 [cited 2020 Mar 3]. p. 99–180. Available from: <http://jama.jamanetwork.com/article.aspx?articleid=1765307>
70. Kirkwood G, Parekh N, Ofori-Asenso R, Pollock AM. Concussion in youth rugby union and rugby league: a systematic review. *Br J Sports Med*

- [Internet]. 2015 Apr 13 [cited 2018 May 21];49(8):506–10. Available from: <http://www.ncbi.nlm.nih.gov/pubmed/25586912>
71. Meehan WP, Mannix RC, Straccioli A, Elbin RJ, Collins MW. Symptom severity predicts prolonged recovery after sport-related concussion, but age and amnesia do not. *J Pediatr*. 2013 Sep 1;163(3):721–5.
 72. Linder SM, Cruickshank J, Zimmerman NM, Figler R, Alberts JL. A technology-enabled electronic incident report to document and facilitate management of sport concussion: A cohort study of youth and young adults. *Medicine (Baltimore)*. 2019 Apr 1;98(14):e14948.
 73. CSX. Concussion Management App | Apple & Android - CSX [Internet]. [cited 2020 Jun 29]. Available from: <https://csx.co.nz/>
 74. King D, Brughelli M, Hume P, Gissane C. Assessment, management and knowledge of sport-related concussion: Systematic review. Vol. 44, *Sports Medicine*. Adis International Ltd; 2014. p. 449–71.
 75. Del Din S, Galna B, Godfrey A, Bekkers EMJ, Pelosin E, Nieuwhof F, et al. Analysis of Free-Living Gait in Older Adults With and Without Parkinson’s Disease and With and Without a History of Falls: Identifying Generic and Disease-Specific Characteristics. *Journals Gerontol Ser A* [Internet]. 2019 Mar 14 [cited 2019 Nov 6];74(4):500–6. Available from: <http://www.ncbi.nlm.nih.gov/pubmed/29300849>
 76. Morris R, Hickey A, Del Din S, Godfrey A, Lord S, Rochester L. A model of free-living gait: A factor analysis in Parkinson’s disease. *Gait Posture* [Internet]. 2017 Feb [cited 2019 Nov 6];52:68–71. Available from: <http://www.ncbi.nlm.nih.gov/pubmed/27883986>
 77. Pitt W, Chen SH, Chou LS. Using IMU-based kinematic markers to monitor dual-task gait balance control recovery in acutely concussed individuals. *Clin Biomech*. 2020 Dec 1;80:105145.
 78. Stuart S, Parrington L, Morris R, Martini DN, Fino PC, King LA. Gait measurement in chronic mild traumatic brain injury: A model approach. *Hum Mov Sci* [Internet]. 2020 Feb 1 [cited 2020 Sep 17];69. Available from: <https://pubmed.ncbi.nlm.nih.gov/31783306/>
 79. Howell D, Osternig L, Chou L-SS. Monitoring recovery of gait balance control following concussion using an accelerometer. *J Biomech* [Internet]. 2015 Sep 18 [cited 2019 Nov 5];48(12):3364–8. Available from: <https://linkinghub.elsevier.com/retrieve/pii/S0021929015003516>
 80. Lord S, Galna B, Verghese J, Coleman S, Burn D, Rochester L. Independent Domains of Gait in Older Adults and Associated Motor and Nonmotor Attributes: Validation of a Factor Analysis Approach. *Med Sci Cite J as J Gerontol A Biol Sci Med Sci* [Internet]. 2013 [cited 2020 May 11];68(7):820–7. Available from: <https://academic.oup.com/biomedgerontology/article-abstract/68/7/820/515594>
 81. Wang Y, Nelson LD, Laroche AA, Pfaller AY, Nencka AS, Koch KM, et al. Cerebral Blood Flow Alterations in Acute Sport-Related Concussion. *J Neurotrauma*. 2016 Jul 1;33(13):1227–36.
 82. Lovell MR, Collins MW, Iverson GL, Field M, Maroon JC, Cantu R, et al. Recovery from mild concussion in high school athletes. *J Neurosurg* [Internet]. 2003 Feb [cited 2018 Apr 11];98(2):296–301. Available from: <https://pubmed.ncbi.nlm.nih.gov/12593614/>
 83. Kenzie ES, Parks EL, Bigler ED, Wright DW, Lim MM, Chesnutt JC, et al. The dynamics of concussion: Mapping pathophysiology, persistence, and recovery with causal-loop diagramming. *Front Neurol* [Internet]. 2018 Apr 4 [cited 2020 Sep 7];9(APR):1. Available from: <https://www.commondataelements.ninds.nih.gov/>
 84. Githens G. Product Lifecycle Management: Driving the Next Generation of Lean Thinking by Michael Grieves. *J Prod Innov Manag* [Internet]. 2007 May 1 [cited 2020 Sep 7];24(3):278–80. Available from: http://doi.wiley.com/10.1111/j.1540-5885.2007.00250_2.x
 85. Björnsson B, Borrebaeck C, Elander N, Gasslander T, Gawel DR, Gustafsson M, et al. Digital twins to personalize medicine [Internet]. Vol. 12, *Genome Medicine*. BioMed Central Ltd.; 2019 [cited 2020 May 3]. p. 4. Available from: <https://genomemedicine.biomedcentral.com/articles/10.1186/s13073-019-0701-3>
 86. Alderson J, Johnson W. THE PERSONALISED “DIGITAL ATHLETE”: An evolving vision for the capture, modelling and simulation, of on-field athletic performance [Internet]. ISBS - Conference Proceedings Archive. 2016 Nov [cited 2020 Sep 6]. Available from: <https://ojs.ub.uni-konstanz.de/cpa/article/view/7099>
 87. Jones D, Snider C, Nassehi A, Yon J, Hicks B. Characterising the Digital Twin: A systematic literature review. *CIRP J Manuf Sci Technol*. 2020 May 1;29:36–52.
 88. Harris B. How “digital twins” are harnessing IoT to advance precision medicine | Healthcare IT News [Internet]. [cited 2020 May 3]. Available from: <https://www.healthcareitnews.com/news/how-digital-twins-are-harnessing-iot-advance-precision-medicine>

Figure captions

Fig. 1. **Contrasting traditional to digital approaches.** (a) Traditional approaches to assessment rely on subjective/pen-and-paper tests which may be administered by different healthcare professionals, introducing scoring bias, (b) Use of digital technologies empower the player/patient to perform test during activities of daily living where e.g., wearables could provide continuous monitoring of motoric tasks like gait/walking (i.e. more emphasis on the player), (c) Digital technologies would enable remote monitoring for longitudinal assessment in habitual settings. This figure has been designed using resources from Freepik.com author, Makrovector: people vector (www.freepik.com/vectors/people), Computer vector (www.freepik.com/vectors/computer), School vector (www.freepik.com/vectors/school).

Fig. 2. **Digital technologies can enable the digital athlete.** Capture visual outcomes through smart glasses, cognitive outcomes through voice activated ear-pods, motor assessment with wearable movement monitors (inertial measurement units) on the wrist or embedded within equipment (e.g. shoe), while symptoms could be recorded through a personal smartphone (not shown), left. The digital representation (right) of the athlete enables high resolution and longitudinal data to be investigated, examining trends. (Parts of this figure utilises photos from Unknown Author, all licensed under CC BY-SA)

Figures

a. Traditional Assessment Techniques



b. Digital Assessment Techniques



c. Telemedicine with Continuous Monitoring

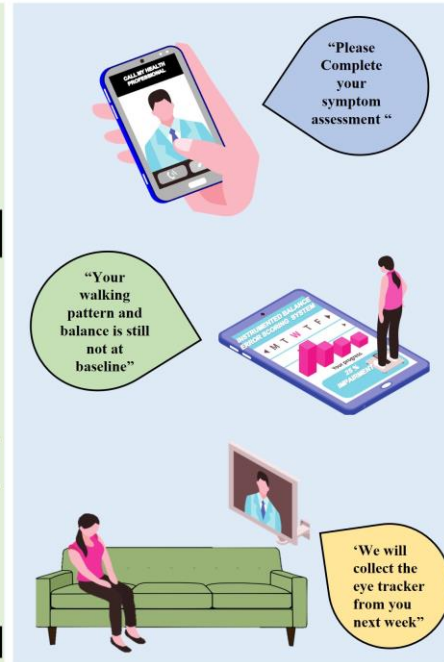


Figure 1

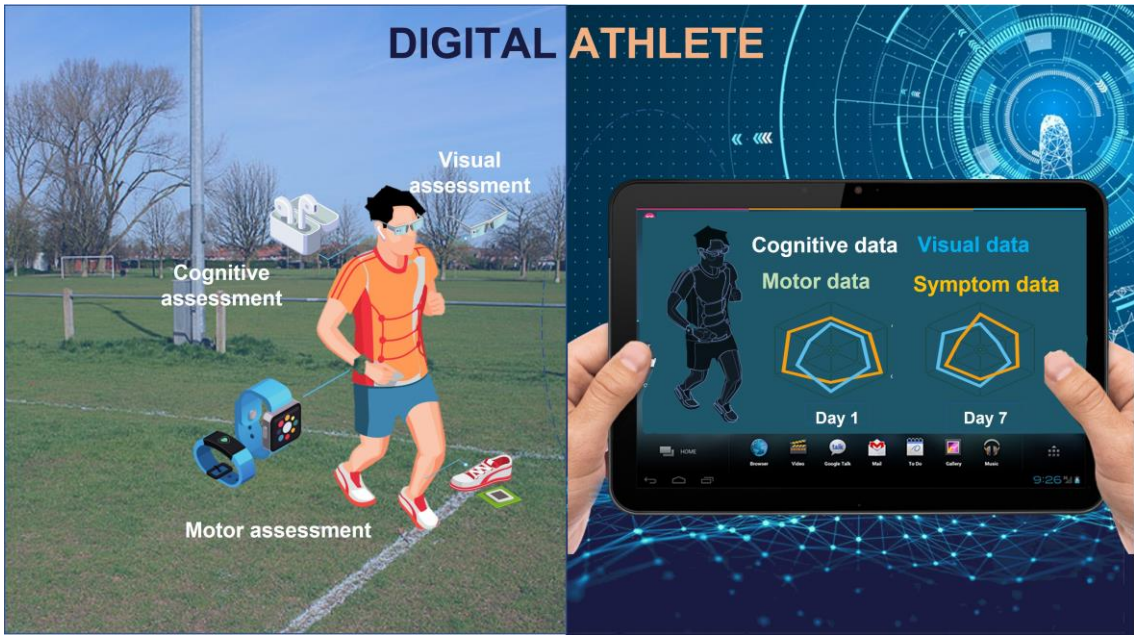


Figure 2