

Impact dynamics of non-Newtonian droplet on superhydrophobic surfaces

Supplementary materials

Mehdi H. Biroun ^{1,2}, Luke Haworth ², Hossein Abdolnezhad ², Arash Khosravi ³, Prashant Agrawal ², Glen McHale, ⁴ Hamdi Torun ², Ciro Semperebon ², Masoud Jabbari ⁵, Yong-Qing Fu ^{2,*}

¹Department of Chemical Engineering, University College London, London WC1E 7JE, UK.

²Faculty of Engineering and Environment, University of Northumbria, Newcastle upon Tyne NE1 8ST, UK.

³School of Mechanical Engineering, Iran University of Science and Technology, Iran.

⁴Institute for Multiscale Thermofluids, School of Engineering, University of Edinburgh, Kings Building, Edinburgh, EH9 3FB, UK.

⁵School of Mechanical Engineering, University of Leeds, Leeds LS2 9JT, UK.

*Corresponding author: Prof. Richard Y.Q. Fu, email: richard.fu@northumbria.ac.uk

Table of contents

Figure S1: SEM images of Glaco coated surface. a) Before impacts. b) After impacts S2

Figure S2: Snapshots of (a) X800, (b) X4000, and (c) X6000 solutions impacting on GLACO-coated surface. In all experiments, a droplet with a volume of 3.6 μl impacts the solid surface with a velocity of 1.4 m/s S2

Figure S3: Snapshots of X400 and X4000 droplets at the separation moment from the superhydrophobic surface for scenarios with an initial impact velocity of (a) 2.43 m/s, and (b) 2.8 m/s S3

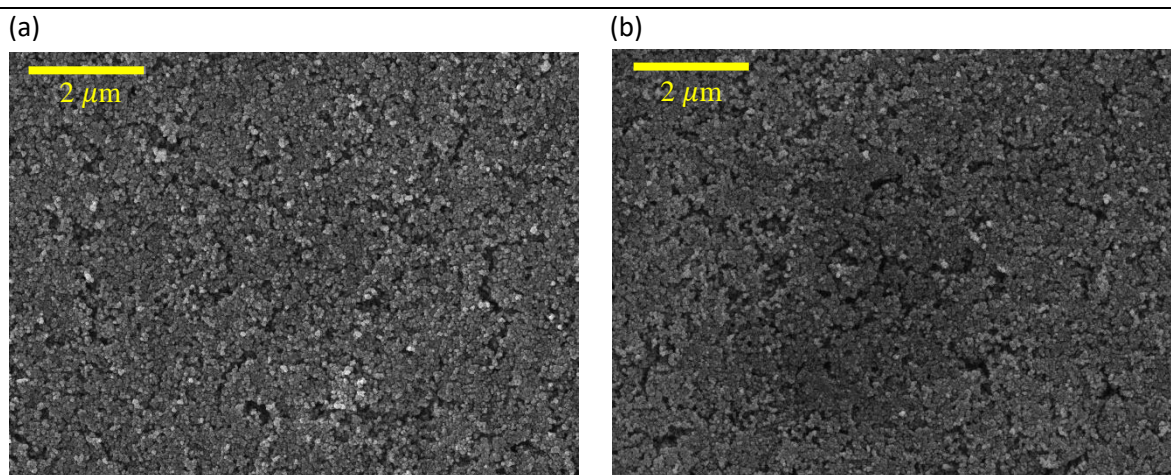


Figure S1: SEM images of Glaco coated surface. a) Before impacts. b) After impacts.

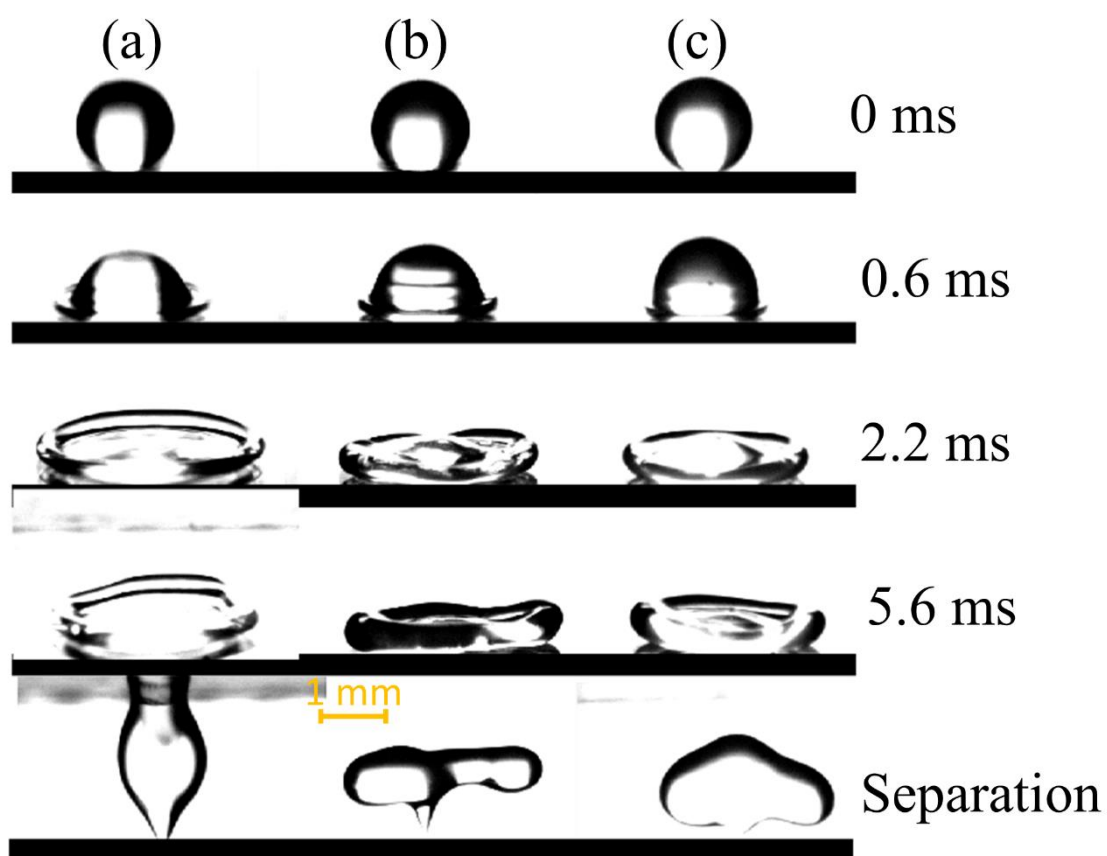


Figure S2: Snapshots of (a) X800, (b) X4000, and (c) X6000 solutions impacting on GLACO-coated surface. In all experiments, a droplet with a volume of 3.6 μl impacts the solid surface with a velocity of 1.4 m/s.

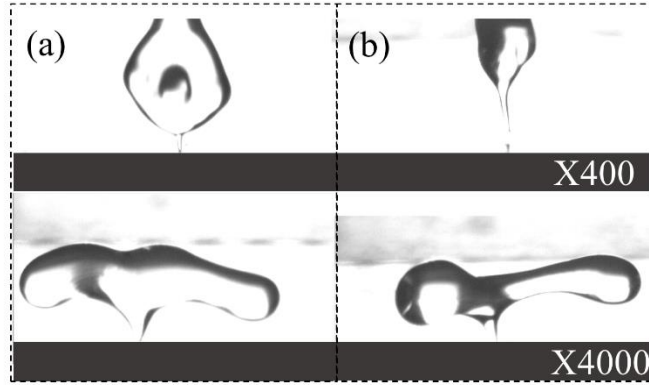


Figure S3: Snapshots of X400 and X4000 droplets at the separation moment from the superhydrophobic surface for scenarios with an initial impact velocity of (a) 2.43 m/s , and (b) 2.8 m/s .
